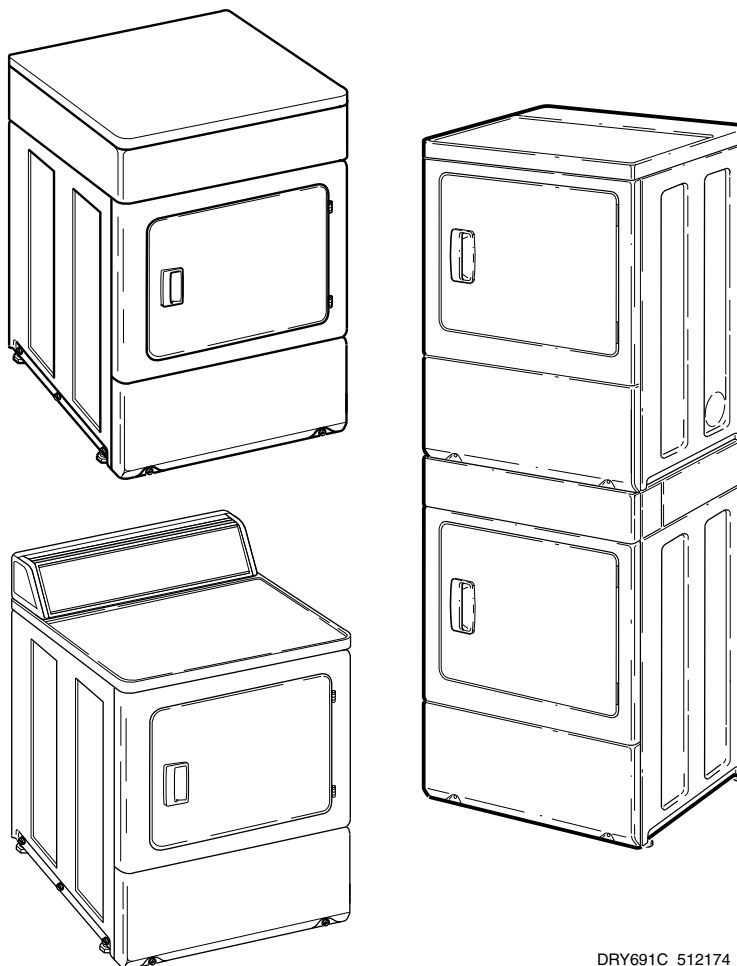


# Home Dryers

Refer to Page 3 for Model Numbers



DRY691C\_512174



# Table of Contents

Title	Page
Parts Ordering Information.....	2
Nameplate Location .....	2
Model Identification .....	3
Control Panel and Controls - Rear Control .....	4
Control Panel and Controls - Front Control.....	6
Control Cabinet and Controls.....	8
Control Panel and Controls - Stacked Models .....	10
Loading Door - Without Window (Drawing 1 of 2).....	12
Loading Door - Without Window (Drawing 2 of 2).....	14
Loading Door - With Window .....	16
Access Panel, Front Panel and Seal .....	18
Motor, Exhaust Fan and Belt .....	20
Front Bulkhead, Air Duct, Felt Seal and Cylinder with Light .....	22
Front Bulkhead, Air Duct, Felt Seal and Cylinder without Light .....	24
Rear Bulkhead, Felt Seal, Cylinder Roller and Terminal Block.....	26
Heater Duct and Element Assembly .....	28
Heater Duct Assembly .....	30
Gas Valve, Igniter and Gas Conversion Kits.....	32
Burner Orifice Spuds - For Higher Elevations .....	34
Cabinet, Exhaust Duct and Base - Single Dryers .....	36
Cabinet, Exhaust Duct and Base - Stacked Dryers .....	38
Lead-In Cord .....	40
Terminal Block and Terminals .....	42
Terminals .....	44
Terminals and Terminal Extractor Tools .....	46
Wire Harnesses and Wires - Stacked Models.....	48
Wire Harnesses and Wires - Stacked Models Through Serial No. 1303025314 .....	50
Wire Harnesses and Wires - Stacked Models Starting Serial No. 1303025315 .....	52
Wire Harnesses and Wires - Front Control Models.....	54
Wire Harnesses and Wires - Front Control Models Through Serial No. 1303025314 .....	56
Wire Harnesses and Wires - Front Control Models Starting Serial No. 1303025315 .....	58
Wire Harnesses and Wires - Rear Control Models Through Serial No. 1207 .....	60
Wire Harnesses and Wires - Rear Control Models Starting Serial No. 1207 .....	62
Parts Index.....	65

© Copyright 2013, Alliance Laundry Systems LLC

All rights reserved. No part of the contents of this book may be reproduced or transmitted in any form or by any means without the expressed written consent of the publisher.

## Parts Ordering Information

If literature or replacement parts are required, contact the source from whom the machine was purchased or contact Alliance Laundry Systems at (920) 748-3950 for the name and address of the nearest authorized parts distributor.

For technical assistance, call either of the numbers listed below:

(920) 748-3121 Ripon, Wisconsin

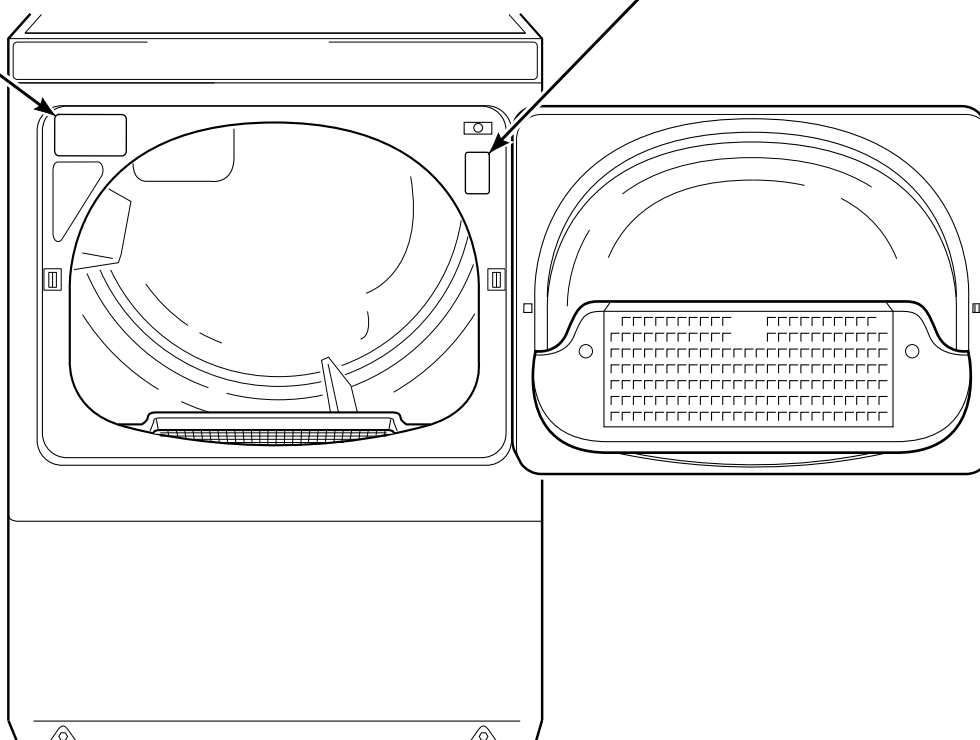
+32 56 41 20 54 Wevelgem, Belgium

## Nameplate Location

When calling or writing about your product, be sure to mention model and serial numbers. Model and serial numbers are located on nameplate(s) as shown.

**NAMEPLATE**  
(Models starting Serial No. 1206025810)

**NAMEPLATE**  
(Models through Serial No. 1206025809)



DRY2283P\_512174

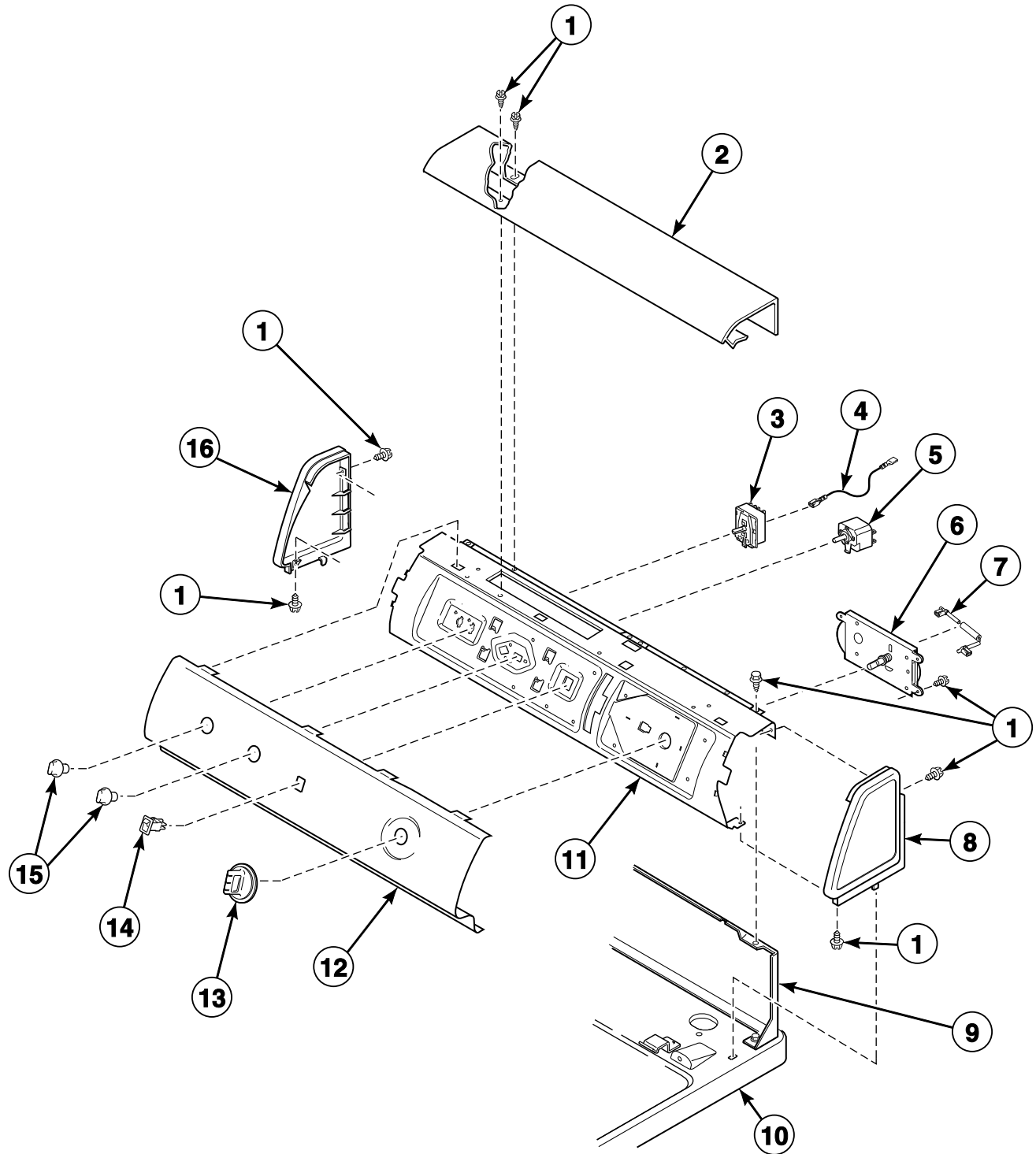
## Model Identification

Information in this manual is applicable to these dryer models:

ADE30RGS171TW01	AES17AWF	CES68AWF
ADE3LRGS171TW01	AES20AWF	CES68AWF1500
ADE41FSS171TN01	AES28AWF	CGS68AWF
ADE4BFGS171TW01	AES28AWF1500	KES18AWF
ADE4BRGS171TW01	AES68AWF	KES18AWF1500
ADE4BRGS171TWAH	AES68AWF1500	KGS18AWF
ADG30RGS111TW01	AGS17AWF	
ADG3LRGS111TW01	AGS20AWF	
ADG41FSS111TN01	AGS28AWF	
ADG4BFGS111TW01	AGS68AWF	
ADG4BRGS111TW01	ASE30FGW171TW01	
ADG4BRGS111TWAH	ASG30FGW111TW01	

# Control Panel and Controls - Rear Control

Models ADE30RGS171TW01, ADE3LRGS171TW01, ADE4BRGS171TW01, ADE4BRGS171TWAH, ADG30RGS111TW01, ADG3LRGS111TW01, ADG4BRGS111TW01, ADG4BRGS111TWAH, AES17AWF, AES20AWF, AES28AWF, AES28AWF1500, AES68AWF, AES68AWF1500, AGS17AWF, AGS20AWF, AGS28AWF and AGS68AWF



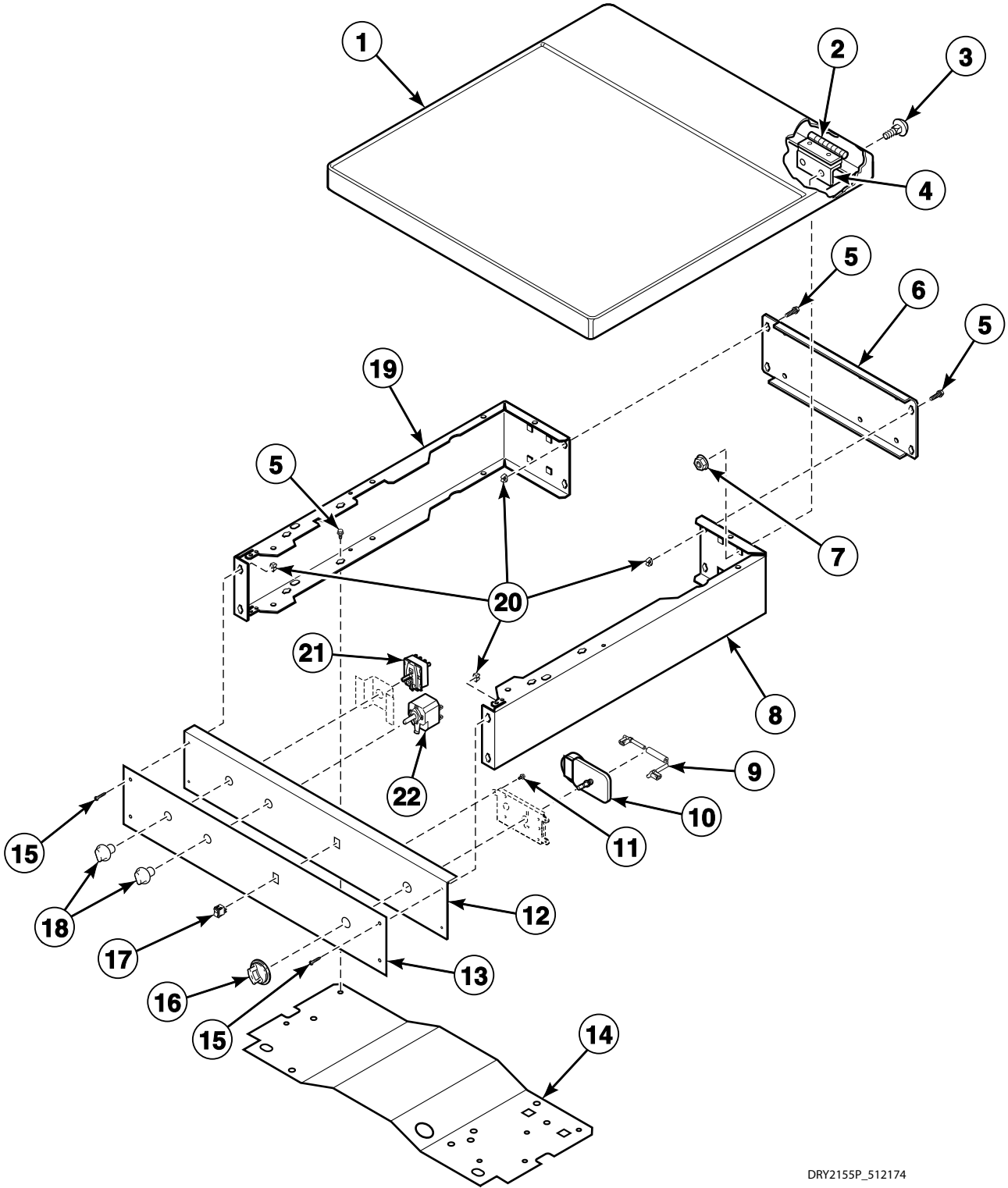
DRY2279P\_512174

## Control Panel and Controls - Rear Control

REF	PART NO.	DESCRIPTION	COMMENTS
	511148	Wire Assembly	Extra tumble; Models ADE4BRGS171TW01, ADE4BRGS171TWAH, ADG4BRGS111TW01, ADG4BRGS111TWAH, AES68AWF, AES68AWF1500 and AGS68AWF; Use with item 14
1	501086	Screw	
2	505808W	Top Cover	
3	513505	Fabric Selector Switch	Models ADE30RGS171TW01, ADE3LRGS171TW01, ADG30RGS111TW01, ADG3LRGS111TW01, AES17AWF, AES20AWF, AES28AWF, AES28AWF1500, AGS17AWF, AGS20AWF and AGS28AWF
	513506	Fabric Selector Switch	Models ADE4BRGS171TW01, ADE4BRGS171TWAH, ADG4BRGS111TW01, ADG4BRGS111TWAH, AES68AWF, AES68AWF1500 and AGS68AWF
4	510540	Wire Assembly	Fabric selector switch to timer; Electric models
5	510211	Buzzer	Models ADE3LRGS171TW01, ADE4BRGS171TW01, ADE4BRGS171TWAH, ADG3LRGS111TW01, ADG4BRGS111TW01, ADG4BRGS111TWAH, AES28AWF, AES28AWF1500, AES68AWF, AES68AWF1500, AGS28AWF and AGS68AWF
6	505797P	Timer and Harness Kit	Models ADE30RGS171TW01, ADE3LRGS171TW01, AES17AWF, AES20AWF, AES28AWF and AES28AWF1500
	505794P	Timer	Models ADG30RGS111TW01, ADG3LRGS111TW01, AGS17AWF, AGS20AWF and AGS28AWF
	511150P	Timer	Models ADE4BRGS171TW01, ADE4BRGS171TWAH, AES68AWF and AES68AWF1500
	511149P	Timer	Models ADG4BRGS111TW01, ADG4BRGS111TWAH and AGS68AWF
7	511277	Resistor Assembly	Electric models
8	504008WP	End Panel	Right
9	510099	Hood Back Panel	
10	510029WP	Top Panel Kit	
11	503901	Control Support Panel	
12	512211W	Graphic Panel	Models AES20AWF, AES28AWF, AES28AWF1500, AGS20AWF and AGS28AWF
	512213W	Graphic Panel	Models AES68AWF, AES68AWF1500 and AGS68AWF
	512179W	Graphic Panel	Models AES17AWF and AGS17AWF
	513015W	Graphic Panel	Models ADE4BRGS171TW01 and ADG4BRGS111TW01
	513011W	Graphic Panel	Models ADE30RGS171TW01 and ADG30RGS111TW01
	513012W	Graphic Panel	Models ADE3LRGS171TW01 and ADG3LRGS111TW01
	514304W	Graphic Panel	Models ADE4BRGS171TWAH and ADG4BRGS111TWAH
13	803168P	Knob Assembly	Models ADE30RGS171TW01, ADE3LRGS171TW01, ADE4BRGS171TW01, ADG30RGS111TW01, ADG3LRGS111TW01 and ADG4BRGS111TW01
	804720	Knob Assembly	Models ADE4BRGS171TWAH and ADG4BRGS111TWAH
	512117W	Timer Knob Assembly	All other models
14	38424W	Rocker Switch	Models ADE4BRGS171TW01, ADE4BRGS171TWAH, ADG4BRGS111TW01, ADG4BRGS111TWAH, AES68AWF, AES68AWF1500 and AGS68AWF
15	803119P	Control Knob Assembly	Models ADE30RGS171TW01, ADE3LRGS171TW01, ADE4BRGS171TW01, ADG30RGS111TW01, ADG3LRGS111TW01 and ADG4BRGS111TW01
	804719	Control Knob Assembly	Models ADE4BRGS171TWAH and ADG4BRGS111TWAH
	36701W	Knob Assembly	All other models
16	504009WP	End Panel	Left

# Control Panel and Controls - Front Control

Models ADE4BFGS171TW01, ADG4BFGS111TW01, CES68AWF, CES68AWF1500 and CGS68AWF



DRY2155P\_512174

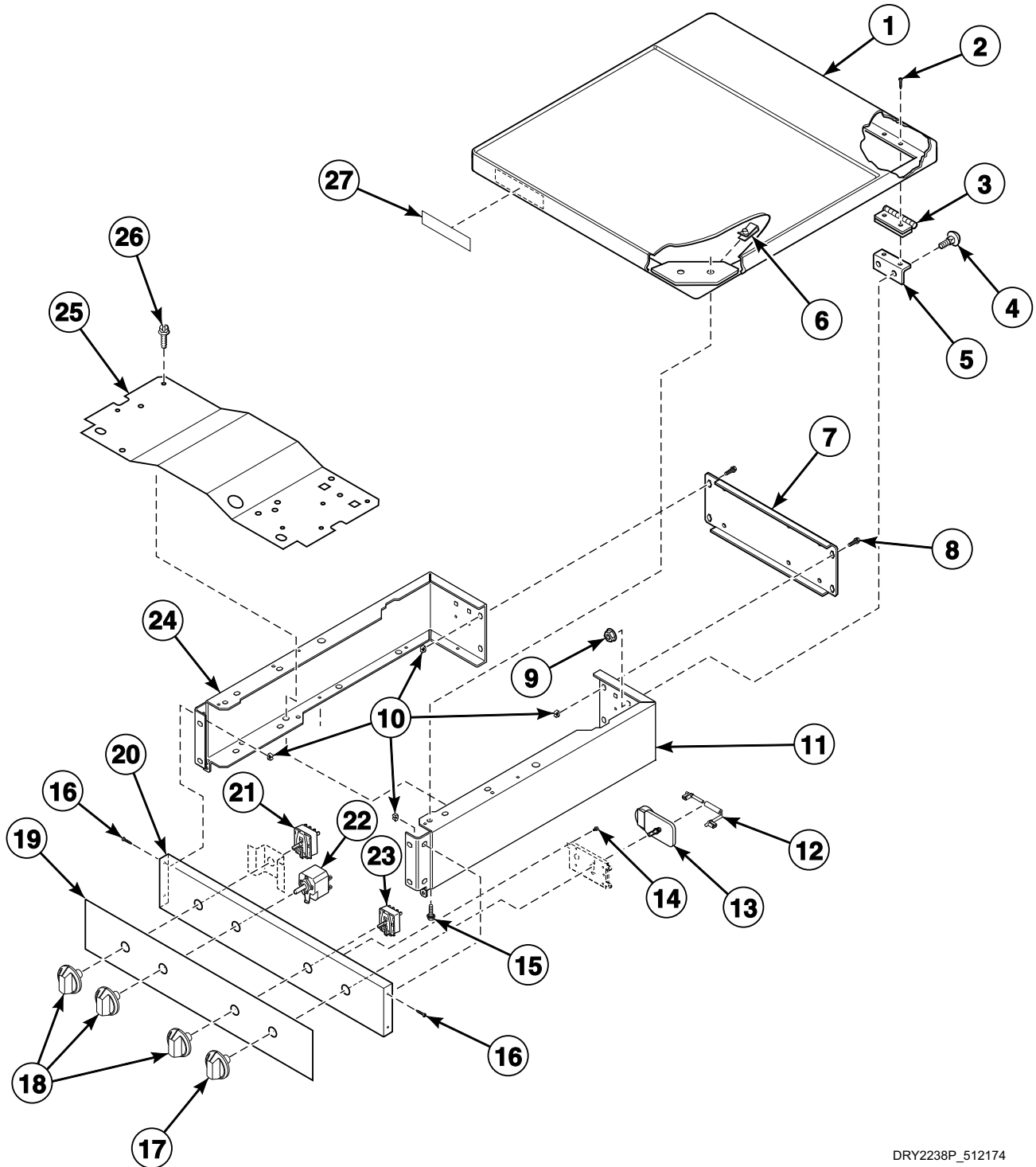


## Control Panel and Controls - Front Control

REF	PART NO.	DESCRIPTION	COMMENTS
	511148	Wire Assembly	Extra tumble; Use with item 17
1	802247WP	Top and Gusset Assembly	
2	511036	Hinge	
3	29651	Bolt	4 required
4	504228	Top Mounting Bracket	
5	70240301	Screw	8 required
6	800867	Control Cabinet Rear	
7	44087201	Nut	4 required
8	800915W	Right Control Cabinet Side	
9	511277	Resistor Assembly	Use with 511150 4 Cycle Timer; Models ADE4BFGS171TW01, ADG4BFGS111TW01, CES68AWF and CES68AWF1500
10	511149P	Timer	Models ADG4BFGS111TW01 and CGS68AWF
	511150P	Timer	Models ADE4BFGS171TW01, CES68AWF and CES68AWF1500
11	501086	Screw	
12	512067W	Control Panel Assembly	
13	513014	Graphic Overlay	Models ADE4BFGS171TW01 and ADG4BFGS111TW01
	512214	Graphic Overlay	All other models
14	801777	Control Cabinet Bottom	
15	800930	Screw	4 required
16	803118P	Timer Knob Assembly	Models ADE4BFGS171TW01 and ADG4BFGS111TW01
	512117W	Timer Knob Assembly	All other models
17	38424W	Rocker Switch	
18	803119P	Control Knob Assembly	Models ADE4BFGS171TW01 and ADG4BFGS111TW01
	36701W	Knob Assembly	All other models
19	800900WP	Left Control Cabinet Side	
20	70030501	Expansion Clip	12 required
21	513506	Fabric Selector Switch	
22	510211	Buzzer	

# Control Cabinet and Controls

Models ADE41FSS171TN01 and ADG41FSS111TN01



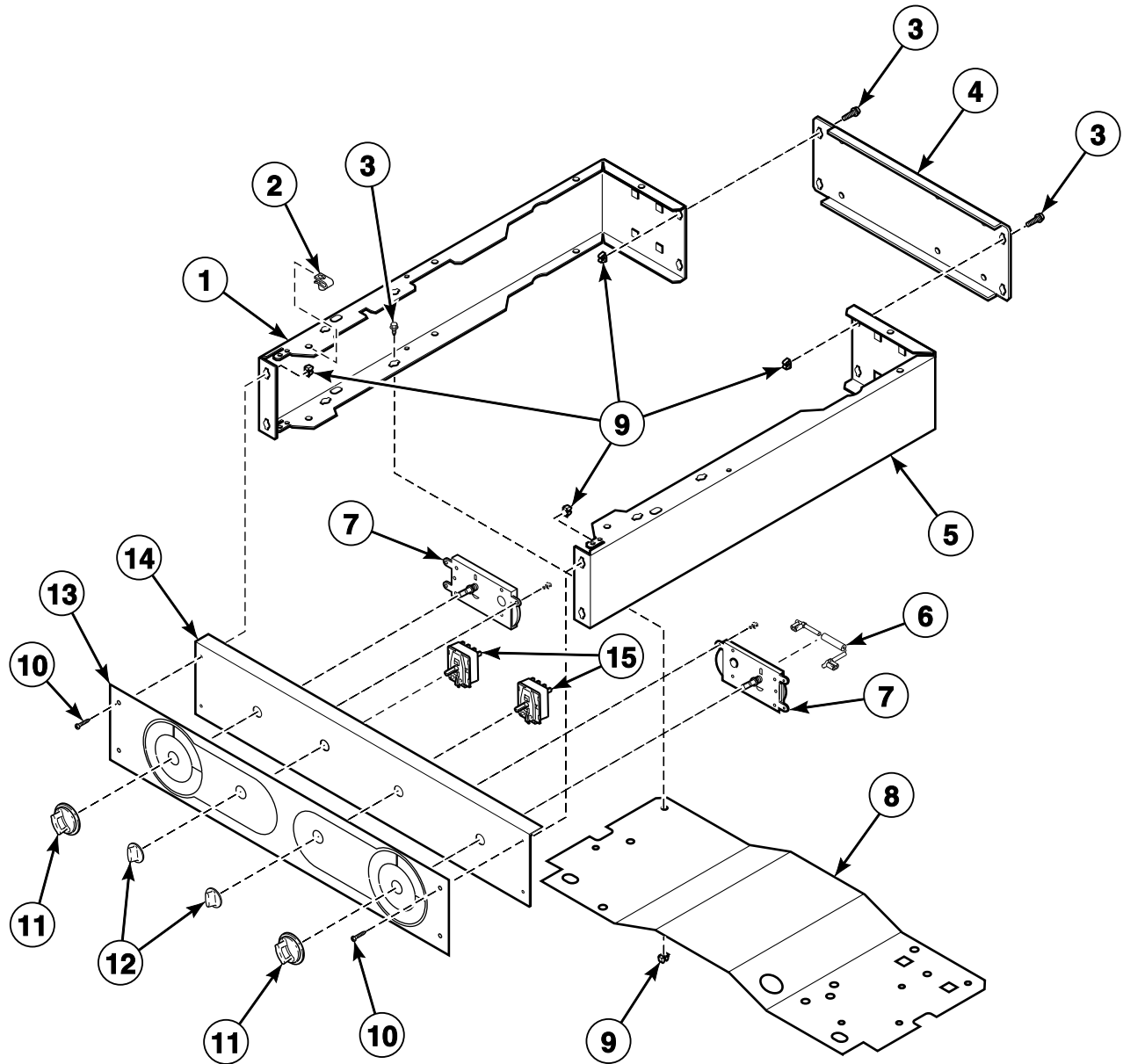
DRY2238P\_512174

## Control Cabinet and Controls

REF	PART NO.	DESCRIPTION	COMMENTS
	513170P	Wire Assembly	Extra tumble
1	803144P	Top Kit	
2	685847	Pop Rivet	
3	511036	Hinge	
4	29651	Bolt	
5	504228	Top Mounting Bracket	
6	36020	Nut	
7	801058	Rear Control Cabinet	
8	70240301	Screw	
9	44087201	Nut	
10	70030501	Expansion Clip	
11	803141	Control Cabinet	Right; Stainless steel
	513701	Control Cabinet	Right; Gray
12	511277	Resistor Assembly	Use with 511150 4 Cycle Timer; Model ADE41FSS171TN01
13	511149P	Timer	Model ADG41FSS111TN01
	511150P	Timer	Model ADE41FSS171TN01
14	501086	Screw	
15	23008	Screw	
16	F430956	Screw	
17	803098P	Timer Knob Assembly	
18	803099P	Control Knob Assembly	
19	513112	Panel	
20	513161	Control Panel Assembly	
21	513506	Fabric Selector Switch	
22	510211	Buzzer	
23	803568	Selector Switch	
24	803142	Control Cabinet	Left; Stainless steel
	513702	Control Cabinet	Left; Gray
25	801777	Control Cabinet Bottom	
26	M405188	Screw	Use with stainless steel side panels
	503661	Screw	Use with painted side panels
27	803013	Badge	

# Control Panel and Controls - Stacked Models

Models ASE30FGW171TW01, ASG30FGW111TW01, KES18AWF, KES18AWF1500 and KGS18AWF



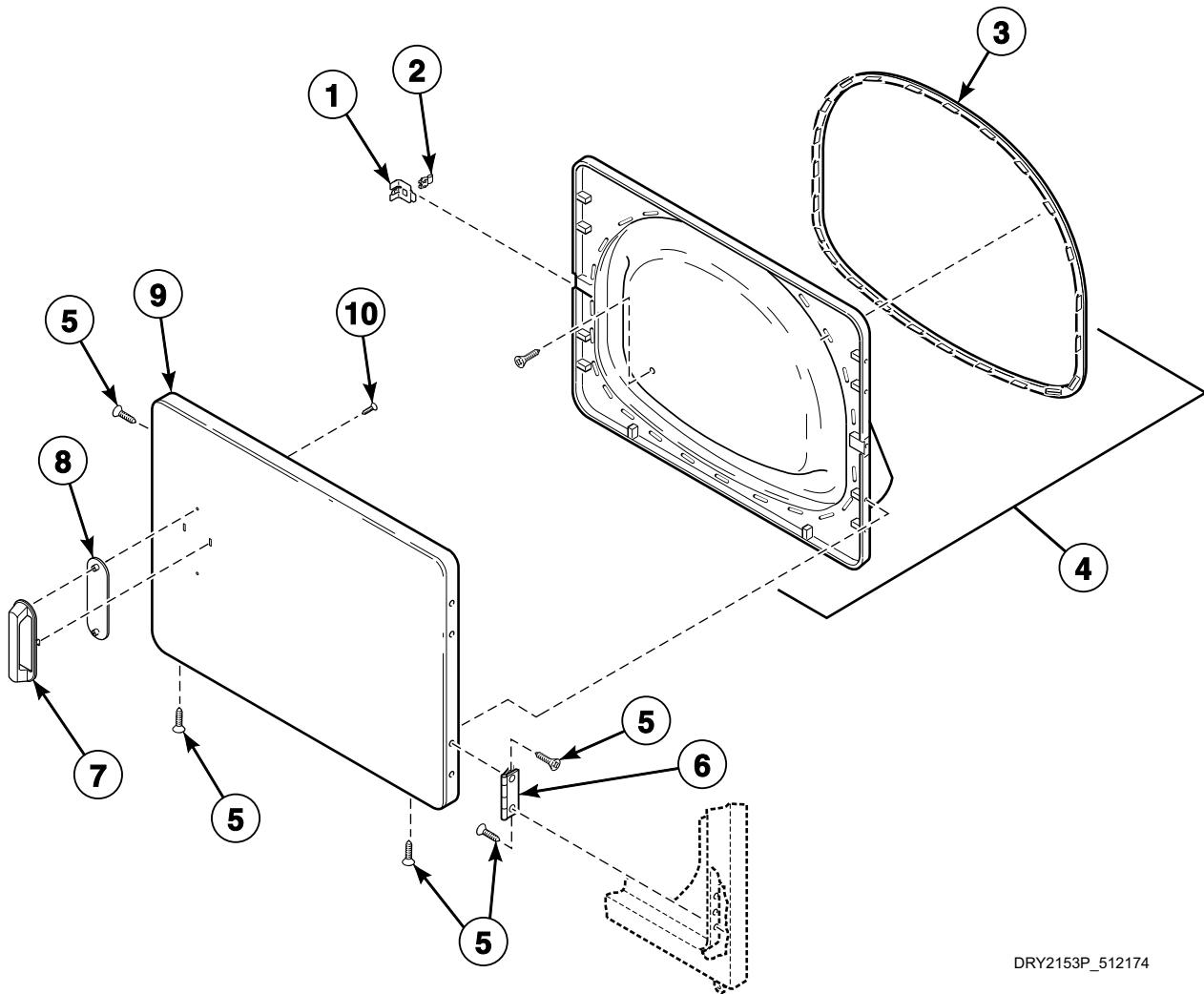
DRY2137P\_512174

## Control Panel and Controls - Stacked Models

REF	PART NO.	DESCRIPTION	COMMENTS
1	800900WP	Left Control Cabinet Side	
2	800931	Nut	
3	430497	Screw	
4	801058	Rear Control Cabinet	
5	800915W	Right Control Cabinet Side	
6	511277	Resistor Assembly	Use with 505797 Timer; Models ASE30FGW171TW01, KES18AWF and KES18AWF1500
7	505797P	Timer and Harness Kit	Models ASE30FGW171TW01, KES18AWF and KES18AWF1500
	505794P	Timer	Models ASG30FGW111TW01 and KGS18AWF
8	801777	Control Cabinet Bottom	
9	70030501	Expansion Clip	
10	800930	Screw	
11	803118P	Timer Knob Assembly	Models ASE30FGW171TW01 and ASG30FGW111TW01
	512117W	Timer Knob Assembly	All other models
12	803119P	Control Knob Assembly	Models ASE30FGW171TW01 and ASG30FGW111TW01
	36701W	Knob Assembly	All other models
13	513013	Graphic Overlay	Models ASE30FGW171TW01 and ASG30FGW111TW01
	512212	Graphic Overlay	All other models
14	512034W	Control Panel Assembly	
15	513505	Fabric Selector Switch	

# Loading Door - Without Window (Drawing 1 of 2)

Models ADE41FSS171TN01 and ADG41FSS111TN01



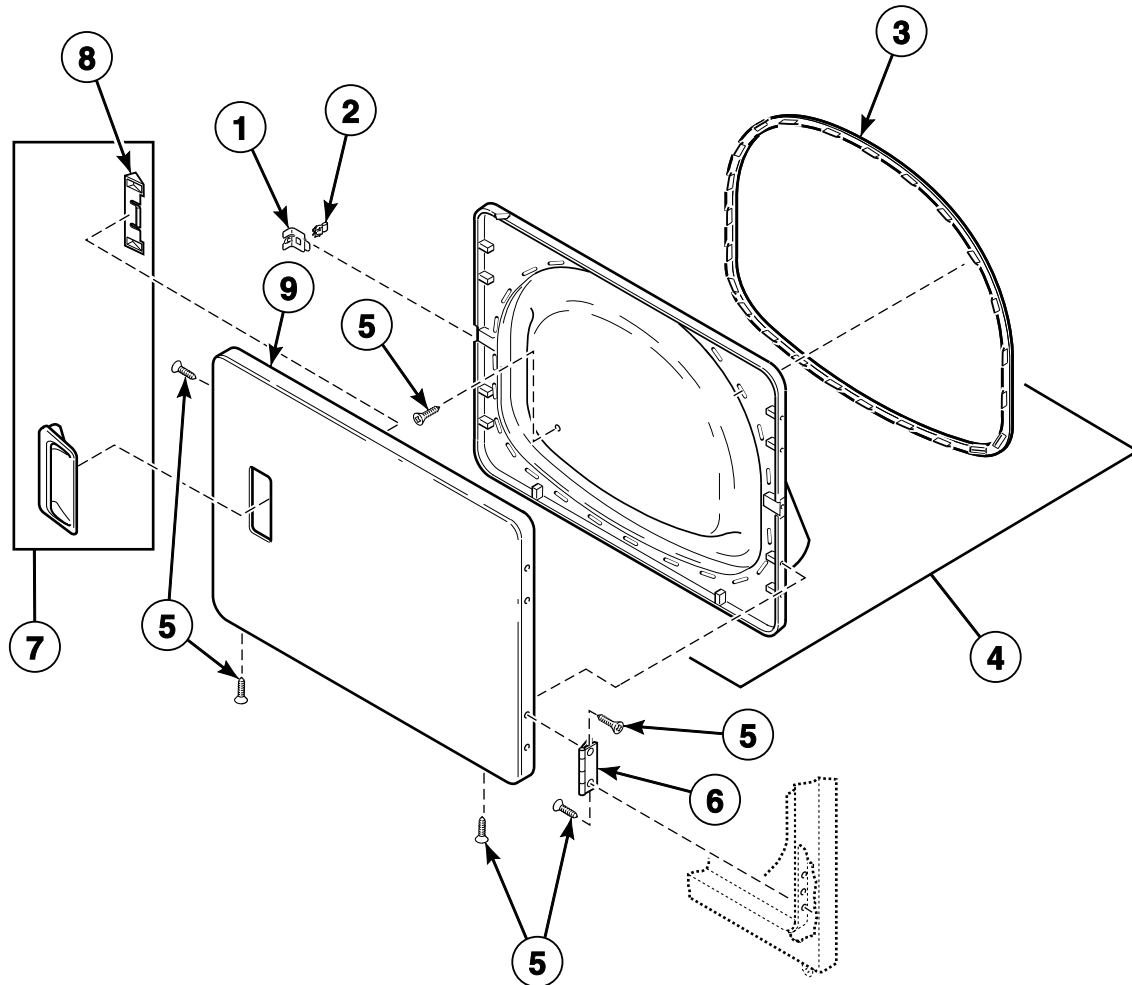
DRY2153P\_512174

## Loading Door - Without Window (Drawing 1 of 2)

REF	PART NO.	DESCRIPTION	COMMENTS
1	510127	Door Strike Mount	
2	510181	Door Strike	
3	510147P	Liner Door Seal	
4	513109P	Liner, Seal and Grill Assembly	Gray
5	505295	Screw	
6	511036	Hinge	
7	803095	Door Handle	
8	803094P	Handle Cover	
9	513156	Dryer Door	
10	800548	Screw	

## Loading Door - Without Window (Drawing 2 of 2)

Models ADE30RGS171TW01, ADE3LRGS171TW01, ADE4BFGS171TW01, ADE4BRGS171TW01, ADE4BRGS171TWAH, ADG30RGS111TW01, ADG3LRGS111TW01, ADG4BFGS111TW01, ADG4BRGS111TW01, ADG4BRGS111TWAH, AES17AWF, AES20AWF, AES28AWF, AES28AWF1500, AES68AWF, AES68AWF1500, AGS17AWF, AGS20AWF, AGS28AWF, AGS68AWF, CES68AWF, CES68AWF1500 and CGS68AWF



DRY1876P\_512174



## Loading Door - Without Window (Drawing 2 of 2)

REF	PART NO.	DESCRIPTION	COMMENTS
1	510127	Door Strike Mount	
2	510181	Door Strike	
3	510147P	Liner Door Seal	
4	513109P	Liner, Seal and Grill Assembly	Gray; Includes item 3; Models ADE30RGS171TW01, ADE3LRGS171TW01, ADE4BFGS171TW01, ADE4BRGS171TW01 and ADE4BRGS171TWAH starting Serial No. 1303025315
	510163WP	Liner, Seal and Grill Assembly	Includes item 3; Models ADE30RGS171TW01, ADE3LRGS171TW01, ADE4BFGS171TW01, ADE4BRGS171TW01 and ADE4BRGS171TWAH through Serial No. 1303025314; All other models
5	505295	Screw	
6	511036	Hinge	
7	510103WP	Door Pull and Wedge Kit	Includes item 8
8	510129	Door Handle Wedge	
9	510013WP	Dryer Door	

Models ASE30FGW171TW01, ASG30FGW111TW01, KES18AWF, KES18AWF1500 and KGS18AWF

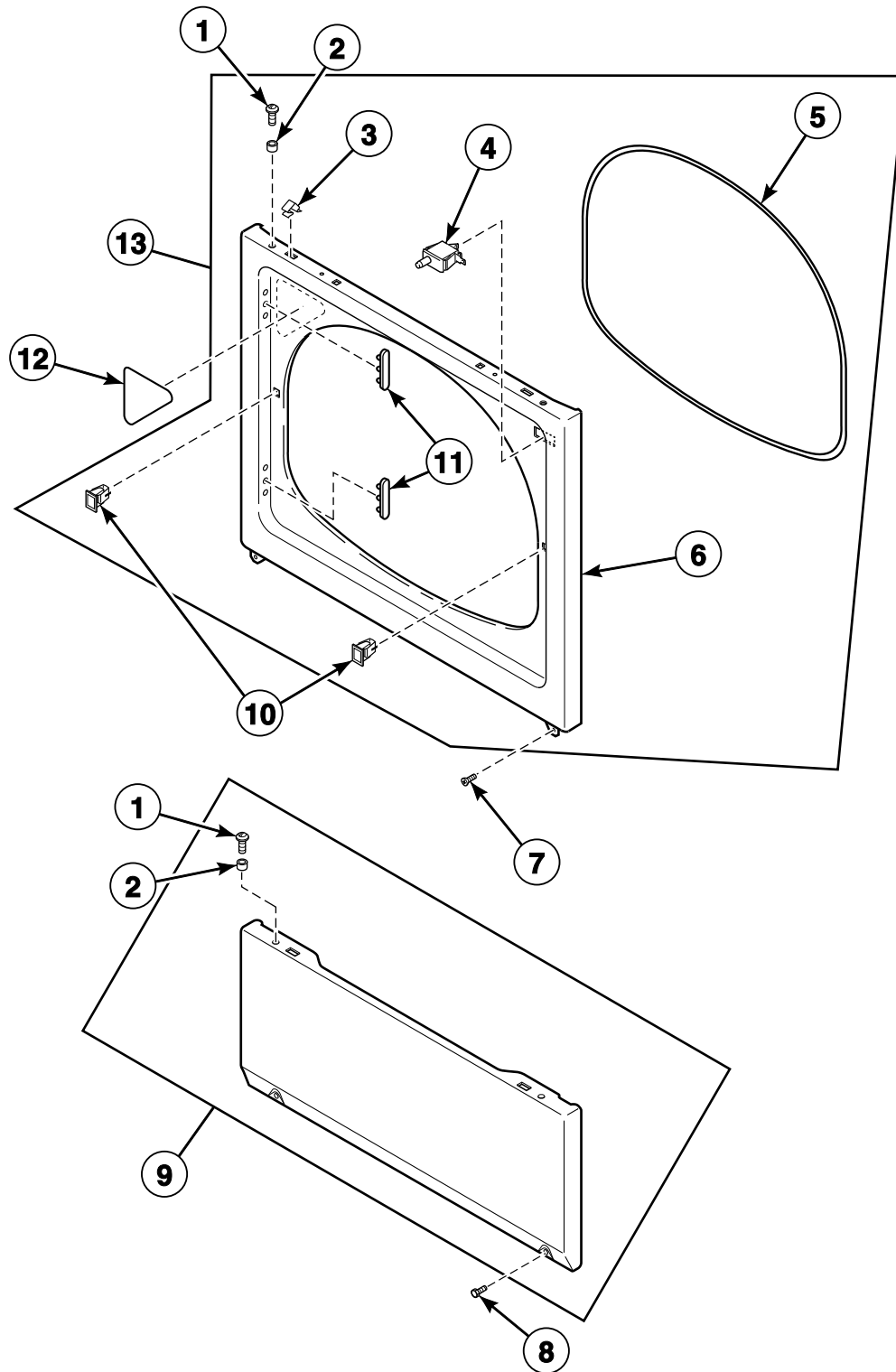
Models ASE30FGW171TW01, ASG30FGW111TW01, KES18AWF, KES18AWF1500 and KGS18AWF



## Loading Door - With Window

REF	PART NO.	DESCRIPTION	COMMENTS
1	514114W	Dryer Door Assembly	Model ASE30FGW171TW01 starting Serial No. 1303025315
	510082WP	Dryer Door	Model ASE30FGW171TW01 through Serial No. 1303025314; All other models
2	510129	Door Handle Wedge	
3	503982P	Dryer Door Window	
4	510127	Door Strike Mount	
5	510181	Door Strike	
6	500226	Screw	
7	510147P	Liner Door Seal	
8	503870LG	Door Liner Grill	Model ASE30FGW171TW01 starting Serial No. 1303025315
	503870W	Door Liner Grill	Model ASE30FGW171TW01 through Serial No. 1303025314; All other models
9	510098LG	Liner and Seal Assembly	Includes item 7; Model ASE30FGW171TW01 starting Serial No. 1303025315
	510098W	Liner and Seal Assembly	Includes item 7; Model ASE30FGW171TW01 through Serial No. 1303025314; All other models
10	505870	Screw	
11	505295	Screw	
12	511036	Hinge	
13	513958	Window Clip	Model ASE30FGW171TW01 starting Serial No. 1303025315
14	44071201	Nut	Model ASE30FGW171TW01 starting Serial No. 1303025315
15	513960W	Window Trim	Model ASE30FGW171TW01 starting Serial No. 1303025315
	503981W	Window Trim	Model ASE30FGW171TW01 through Serial No. 1303025314; All other models
16	513910	Glass Door Window	Model ASE30FGW171TW01 starting Serial No. 1303025315
17	510103WP	Door Pull and Wedge Kit	Includes item 2
18	511636WP	Door and Liner Assembly	White; Includes items 1-10, 15 and 17; Model ASE30FGW171TW01 through Serial No. 1303025314; All other models

## Access Panel, Front Panel and Seal

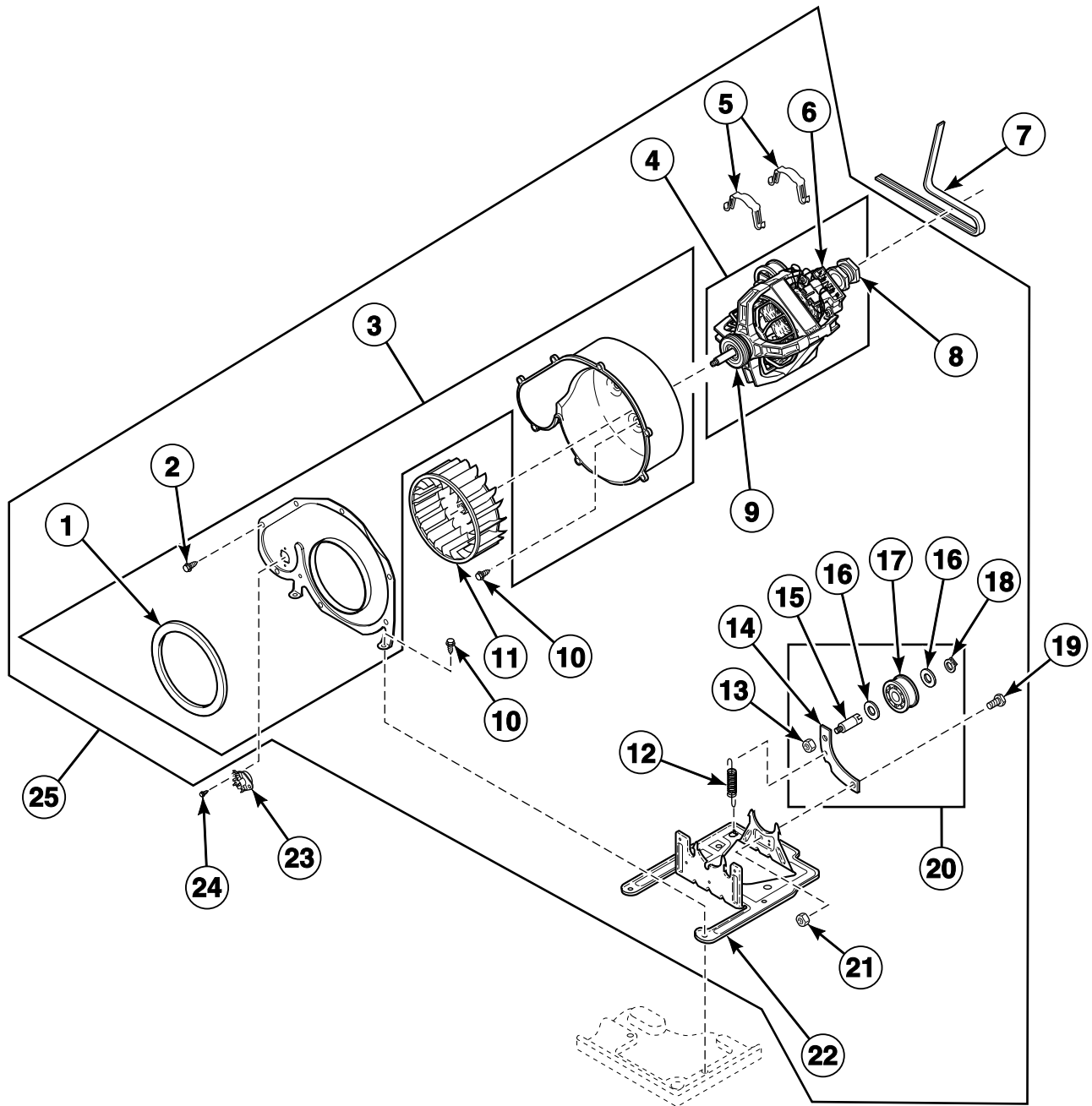


DRY1785P\_512174

## Access Panel, Front Panel and Seal

REF	PART NO.	DESCRIPTION	COMMENTS
1	39733	Screw	
2	56079	Panel Locator	
3	28835	Speed Clip	
4	512973	Switch	
5	511056	Front Panel Seal	
6	512542	Front Panel	Stainless steel; Models ADE41FSS171TN01 and ADG41FSS111TN01
	510066WP	Front Panel	All other models
7	503688	Screw	
8	33562	Screw	
9	514251	Access Panel Assembly	Stainless steel; Model ADE41FSS171TN01 through Serial No. 1303025314; Model ADG41FSS111TN01
	514253	Access Panel and Guard Assembly	Stainless steel; Model ADE41FSS171TN01 starting Serial No. 1303025315
	514252W	Access Panel and Guard Assembly	White; Models ADE30RGS171TW01, ADE3LRGS171TW01, ADE4BFGS171TW01, ADE4BRGS171TW01 and ADE4BRGS171TWAH starting Serial No. 1303025315
	514250W	Access Panel Assembly	Models ADE30RGS171TW01, ADE3LRGS171TW01, ADE4BFGS171TW01, ADE4BRGS171TW01 and ADE4BRGS171TWAH through Serial No. 1303025314; All other models
10	514113	Door Catch Assembly	
11	510186	Hinge Hole Plug	
12	500281	Warning/Caution Label	
13	513781W	Front Panel Assembly	Includes items 1-6, 10, 11, 511636WP Door Assembly, (2) 511036 Hinge and (8) 500226 Screw; Models ASE30FGW171TW01, ASG30FGW111TW01, KES18AWF, KES18AWF1500 and KGS18AWF

## Motor, Exhaust Fan and Belt



SWD1227P\_512174

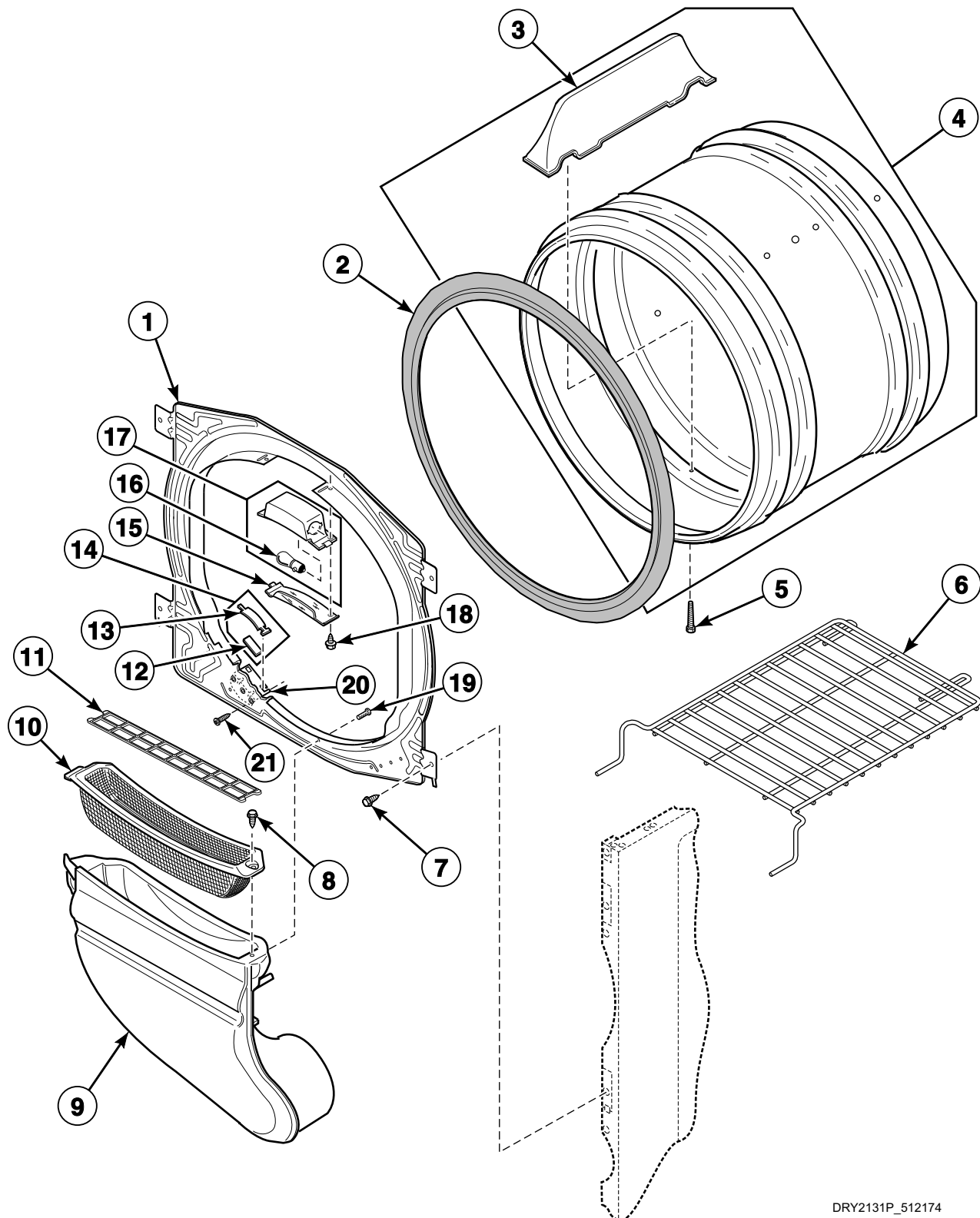
## Motor, Exhaust Fan and Belt

REF	PART NO.	DESCRIPTION	COMMENTS
	27604P	Anti-Seize Compound	Apply to motor shaft when installing blower fan assembly
1	510238P	Blower Housing Seal	
2	31260	Screw	
3	511969WP	Blower Housing	Includes items 1 and 2
4	511629P	Motor and Pulley Assembly	120 Volt/60 Hertz; Includes items 6, 8 and 9; Apply anti-seize compound to motor shaft when installing blower fan assembly
5	510180	Motor Mount Clamp	
6	N/A	Motor Switch Kit	Does not include thermal protector
7	511255P	Cylinder Belt	
8	500011	Motor Pulley	60 Hertz
9	590P3	Motor Hub Ring Kit	
10	503688	Screw	
11	510139P	Blower Fan Assembly	
12	510185	Idler Spring	
13	56156	Nut	
14	510133	Idler Lever	
15	56461P	Shaft	
16	52549	Washer	
17	510142P	Idler Wheel and Bearing Assembly	
18	23748	Retaining Ring	
19	500824	Screw	
20	510158	Idler Lever and Wheel Assembly	Includes items 13-18
21	52566	Nut	
22	510060	Motor Mount	
23	504515	Thermostat	Green; Models ADE30RGS171TW01, ADE3LRGS171TW01, ADE41FSS171TN01, ADE4BFGS171TW01, ADE4BRGS171TW01, ADE4BRGS171TWAH, AES17AWF, AES20AWF, AES28AWF, AES28AWF1500, AES68AWF, AES68AWF1500, ASE30FGW171TW01, CES68AWF, CES68AWF1500, KES18AWF and KES18AWF1500
	510707P	Thermostat	Pink/White; Models ADG30RGS111TW01, ADG3LRGS111TW01, ADG41FSS111TN01, ADG4BFGS111TW01, ADG4BRGS111TW01, ADG4BRGS111TWAH, AGS17AWF, AGS20AWF, AGS28AWF, AGS68AWF, ASG30FGW111TW01, CGS68AWF and KGS18AWF
24	502535	Screw	
25	510717P	Blower and Fan Kit	Includes items 1-6 and 8-22

N/A = Part no longer available

# Front Bulkhead, Air Duct, Felt Seal and Cylinder with Light

Models ADE3LRGS171TW01, ADE41FSS171TN01, ADE4BFGS171TW01, ADE4BRGS171TW01, ADE4BRGS171TWAH, ADG3LRGS111TW01, ADG41FSS111TN01, ADG4BFGS111TW01, ADG4BRGS111TW01, ADG4BRGS111TWAH, AES20AWF, AES28AWF, AES28AWF1500, AES68AWF, AES68AWF1500, AGS20AWF, AGS28AWF, AGS68AWF, CES68AWF, CES68AWF1500 and CGS68AWF



DRY2131P\_512174

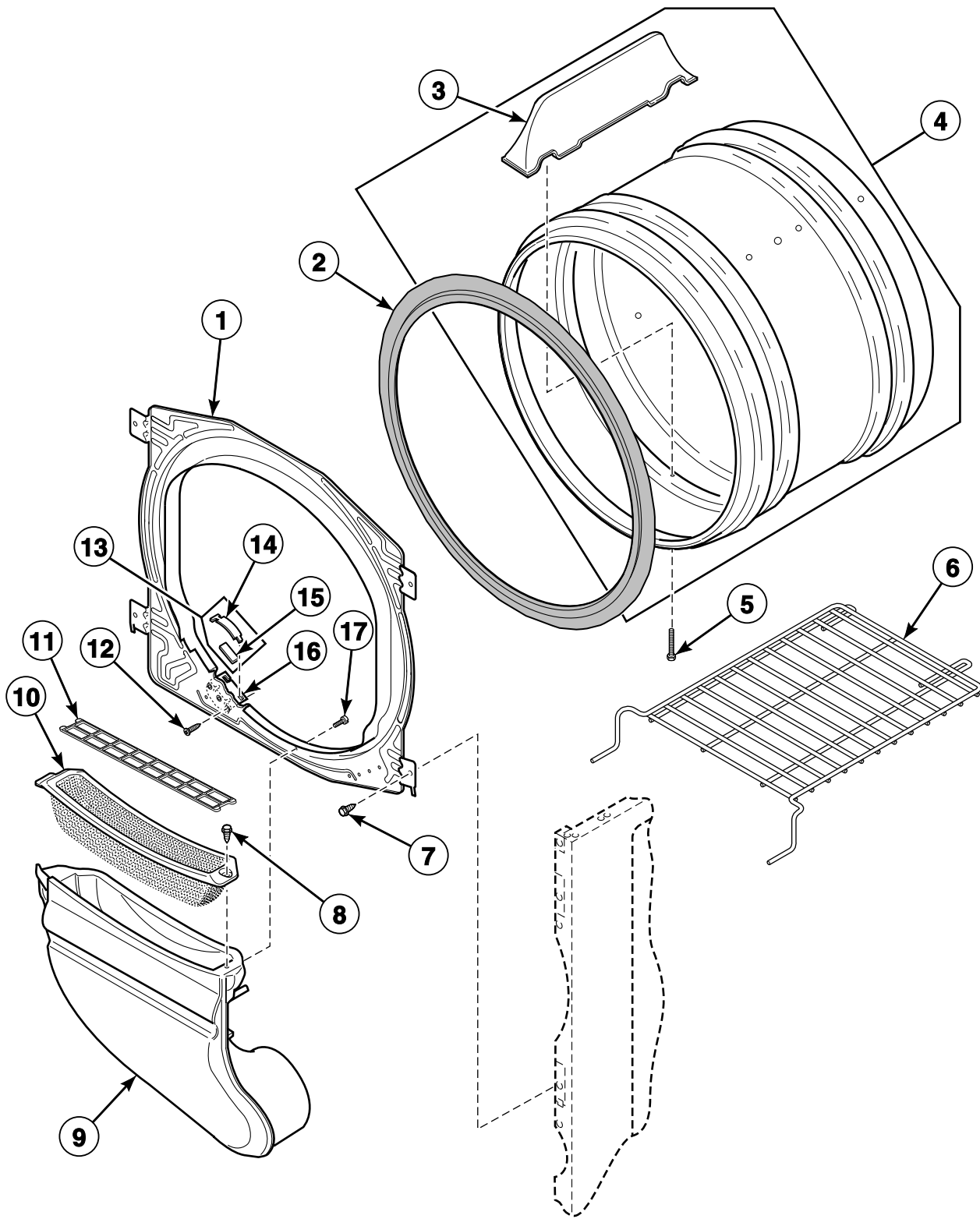


# Front Bulkhead, Air Duct, Felt Seal and Cylinder with Light

REF	PART NO.	DESCRIPTION	COMMENTS
1	512476	Front Bulkhead Assembly	Galvanized; Punched with light; Includes items 2 and 12-19
2	510207P	Cylinder Seal Assembly	
	511637P	Adhesive	Apply to cylinder seal
	RB170001	Seal Kit	Includes 2 cylinder seals, 510238P Blower Housing Seal and 511637P Adhesive
3	510102LG	Cylinder Baffle	3 required; Light gray; Models ADE41FSS171TN01 and ADG41FSS111TN01; Models ADE3LRGS171TW01, ADE4BFGS171TW01, ADE4BRGS171TW01 and ADE4BRGS171TWAH starting Serial No.1303025315
	510102W	Cylinder Baffle	3 required; Models ADE3LRGS171TW01, ADE4BFGS171TW01, ADE4BRGS171TW01 and ADE4BRGS171TWAH through Serial No. 1303025314; All other models
4	505929LG	Cylinder Assembly	Stainless steel; Models ADE41FSS171TN01 and ADG41FSS111TN01
	510265LG	Cylinder Assembly	Models ADE3LRGS171TW01, ADE4BFGS171TW01, ADE4BRGS171TW01 and ADE4BRGS171TWAH starting Serial No. 1303025315
	510265WP	Cylinder Assembly	Includes item 3; Models ADE3LRGS171TW01, ADE4BFGS171TW01, ADE4BRGS171TW01 and ADE4BRGS171TWAH through Serial No. 1303025314; All other models
5	62588	Screw	
6	512082P	Drying Rack	
7	503688	Screw	Use with painted side panels
	M405188	Screw	Use with stainless steel side panels
8	501285	Screw	
9	510151LG	Air Duct Assembly	Models ADE41FSS171TN01 and ADG41FSS111TN01; Models ADE3LRGS171TW01, ADE4BFGS171TW01, ADE4BRGS171TW01 and ADE4BRGS171TWAH starting Serial No. 1303025315
	510151W	Air Duct Assembly	Models ADE3LRGS171TW01, ADE4BFGS171TW01, ADE4BRGS171TW01 and ADE4BRGS171TWAH through Serial No. 1303025314; All other models
10	503980LG	Lint Filter	Light gray; Models ADE41FSS171TN01 and ADG41FSS111TN01; Models ADE3LRGS171TW01, ADE4BFGS171TW01, ADE4BRGS171TW01 and ADE4BRGS171TWAH starting Serial No. 1303025315
	503980W	Lint Filter	Models ADE3LRGS171TW01, ADE4BFGS171TW01, ADE4BRGS171TW01 and ADE4BRGS171TWAH through Serial No. 1303025314; All other models
11	510502LG	Lint Filter Cover	Models ADE3LRGS171TW01, ADE41FSS171TN01, ADE4BFGS171TW01, ADE4BRGS171TW01 and ADE4BRGS171TWAH starting Serial No. 1303025315
	510502W	Lint Filter Cover	Models ADE3LRGS171TW01, ADE41FSS171TN01, ADE4BFGS171TW01, ADE4BRGS171TW01 and ADE4BRGS171TWAH through Serial No. 1303025314; All other models
12	510189	Felt Pad	2 required
13	510188	Cylinder Glide	2 required
14	RB170003	Glide Kit	Includes items 12 and 13
15	512106	Cylinder Light Lens	
16	60954	Drum Light Lamp	
17	512108	Light Housing Assembly	120 Volt; Includes item 16
18	500227	Screw	
19	501086	Screw	
20	510145	Cylinder Glide Bracket	2 required
21	505295	Screw	

# Front Bulkhead, Air Duct, Felt Seal and Cylinder without Light

Models ADE30RGS171TW01, ADG30RGS111TW01, AES17AWF, AGS17AWF, ASE30FGW171TW01, ASG30FGW111TW01, KES18AWF, KES18AWF1500 and KGS18AWF

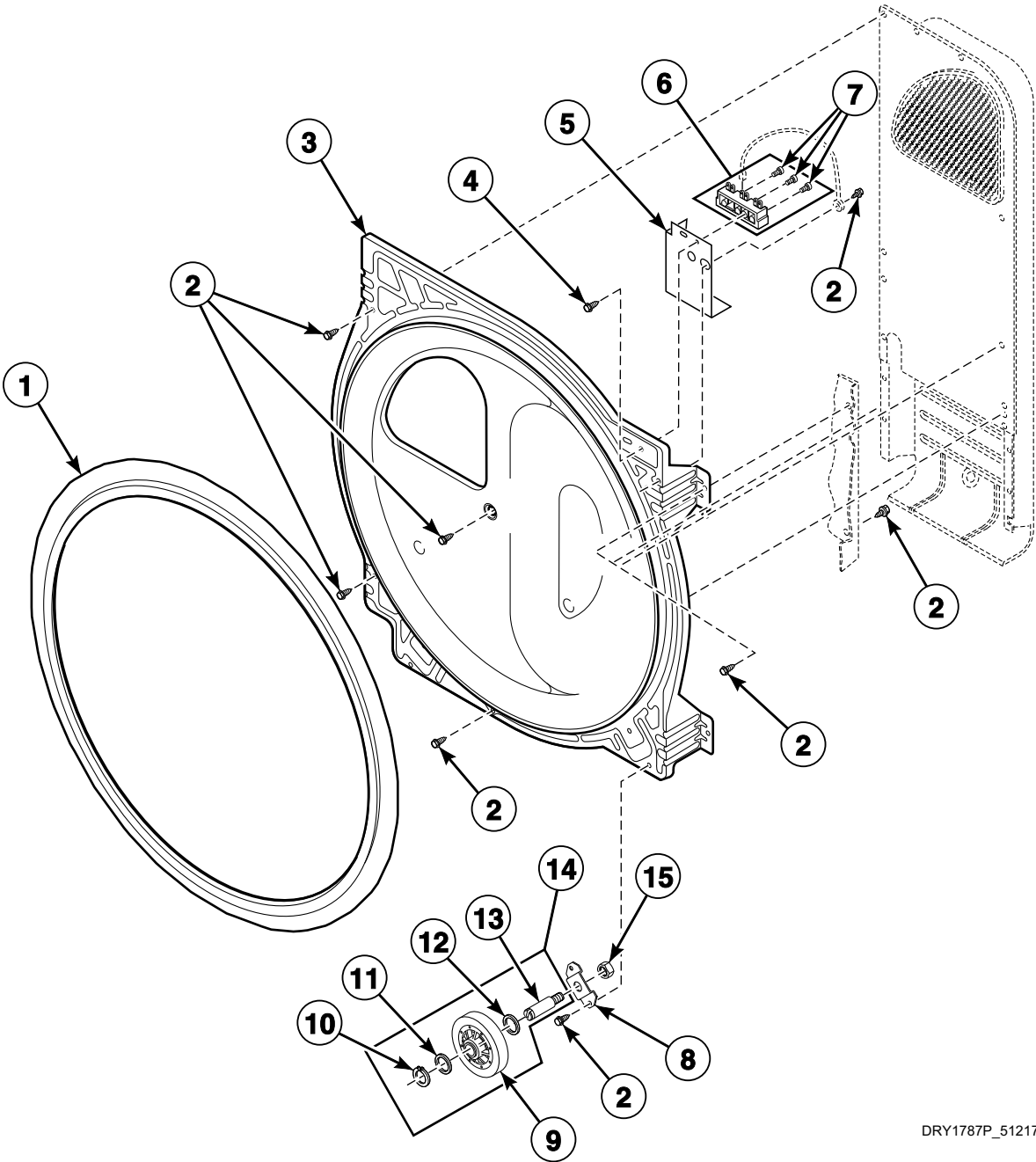


DRY2130P\_512174

# Front Bulkhead, Air Duct, Felt Seal and Cylinder without Light

REF	PART NO.	DESCRIPTION	COMMENTS
1	510266P	Front Bulkhead Assembly	Includes items 2 and 12-16
2	510207P	Cylinder Seal Assembly	
	511637P	Adhesive	Apply to cylinder seal
	RB170001	Seal Kit	Includes 2 cylinder seals, 510238P Blower Housing Seal and 511637P Adhesive
3	510102LG	Cylinder Baffle	3 required; Models ADE30RGS171TW01 and ASE30FGW171TW01 starting Serial No. 1303025315
	510102W	Cylinder Baffle	3 required; Models ADE30RGS171TW01 and ASE30FGW171TW01 through Serial No. 1303025314; All other models
4	510265LG	Cylinder Assembly	Includes item 3; Models ADE30RGS171TW01 and ASE30FGW171TW01 starting Serial No. 1303025315
	510265WP	Cylinder Assembly	Includes item 3; Models ADE30RGS171TW01 and ASE30FGW171TW01 through Serial No. 1303025314; All other models
5	62588	Screw	
6	512082P	Drying Rack	
7	503688	Screw	
8	501285	Screw	
9	510151LG	Air Duct Assembly	Models ADE30RGS171TW01 and ASE30FGW171TW01 starting Serial No. 1303025315
	510151W	Air Duct Assembly	Models ADE30RGS171TW01 and ASE30FGW171TW01 through Serial No. 1303025314; All other models
10	503980LG	Lint Filter	Models ADE30RGS171TW01 and ASE30FGW171TW01 starting Serial No. 1303025315
	503980W	Lint Filter	Models ADE30RGS171TW01 and ASE30FGW171TW01 through Serial No. 1303025314; All other models
11	510502LG	Lint Filter Cover	Models ADE30RGS171TW01 and ASE30FGW171TW01 starting Serial No. 1303025315
	510502W	Lint Filter Cover	Models ADE30RGS171TW01 and ASE30FGW171TW01 through Serial No. 1303025314; All other models
12	52864	Screw	
13	RB170003	Glide Kit	Includes items 14 and 15
14	510188	Cylinder Glide	2 required
15	510189	Felt Pad	2 required
16	510145	Cylinder Glide Bracket	2 required
17	505295	Screw	

Rear Bulkhead, Felt Seal, Cylinder Roller and Terminal Block



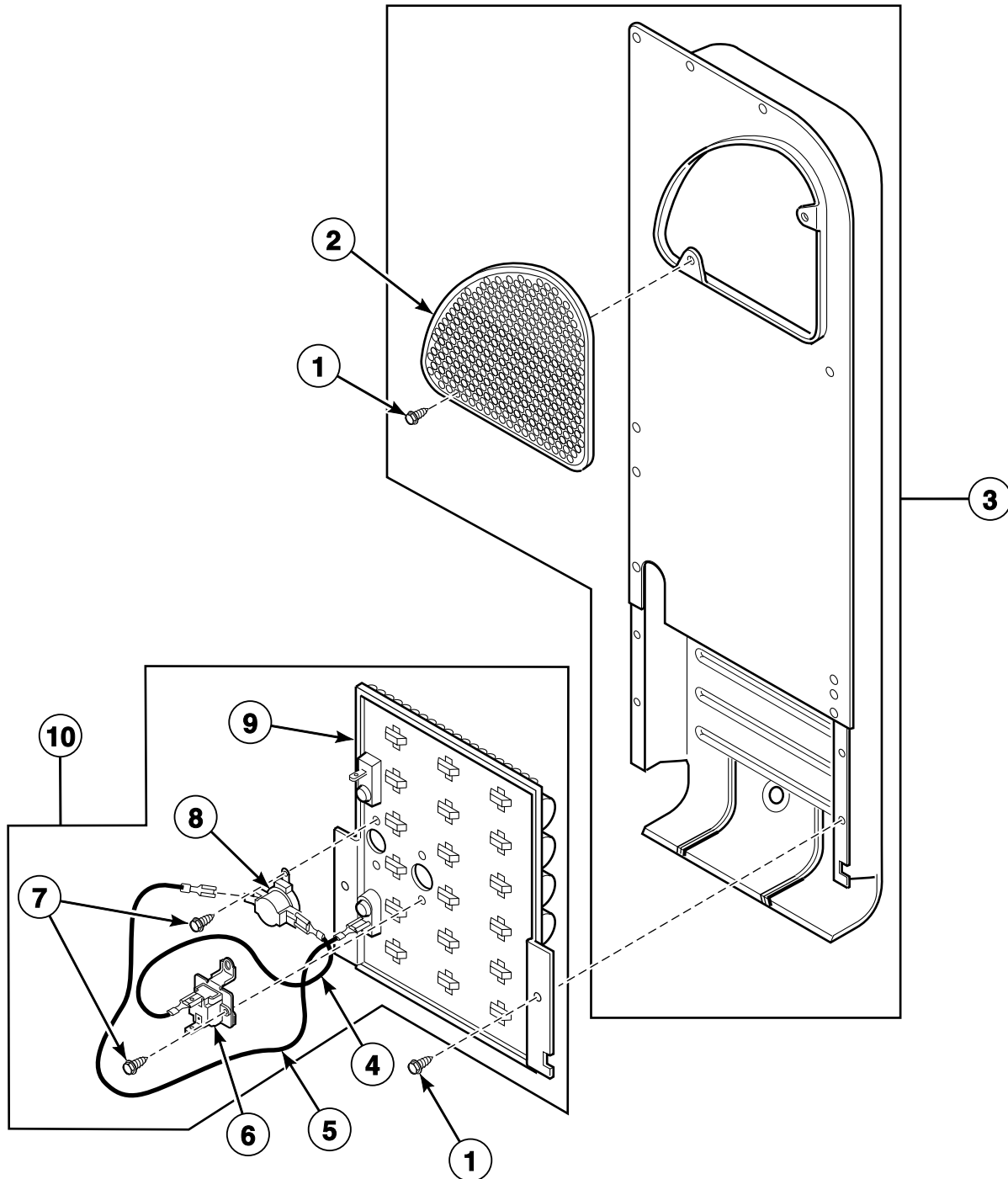
DRY1787P\_512174

## Rear Bulkhead, Felt Seal, Cylinder Roller and Terminal Block

REF	PART NO.	DESCRIPTION	COMMENTS
1	510207P	Cylinder Seal Assembly	
	511637P	Adhesive	Apply to cylinder seal
	RB170001	Seal Kit	Includes 2 cylinder seals, 510238P Blower Housing Seal and 511637P Adhesive
2	503688	Screw	
3	505246	Rear Bulkhead Assembly	Includes item 1; Models ADE41FSS171TN01 and ADG41FSS111TN01
	511082P	Rear Bulkhead Assembly	Includes item 1; All other models
4	501285	Screw	Electric models
5	510237	Terminal Block Shield	Electric models
6	510190P	Terminal Block Assembly	Includes 3 of item 7; Electric models
7	61199	Screw	
8	510100	Cylinder Roller Bracket	
9	510708P	Cylinder Roller	
10	23748	Retaining Ring	
11	52549	Washer	
12	504082	Washer	
13	56461P	Shaft	
14	RB170002	Roller Kit	Includes 2 each of items 9-13
15	56156	Nut	

# Heater Duct and Element Assembly

Electric Models



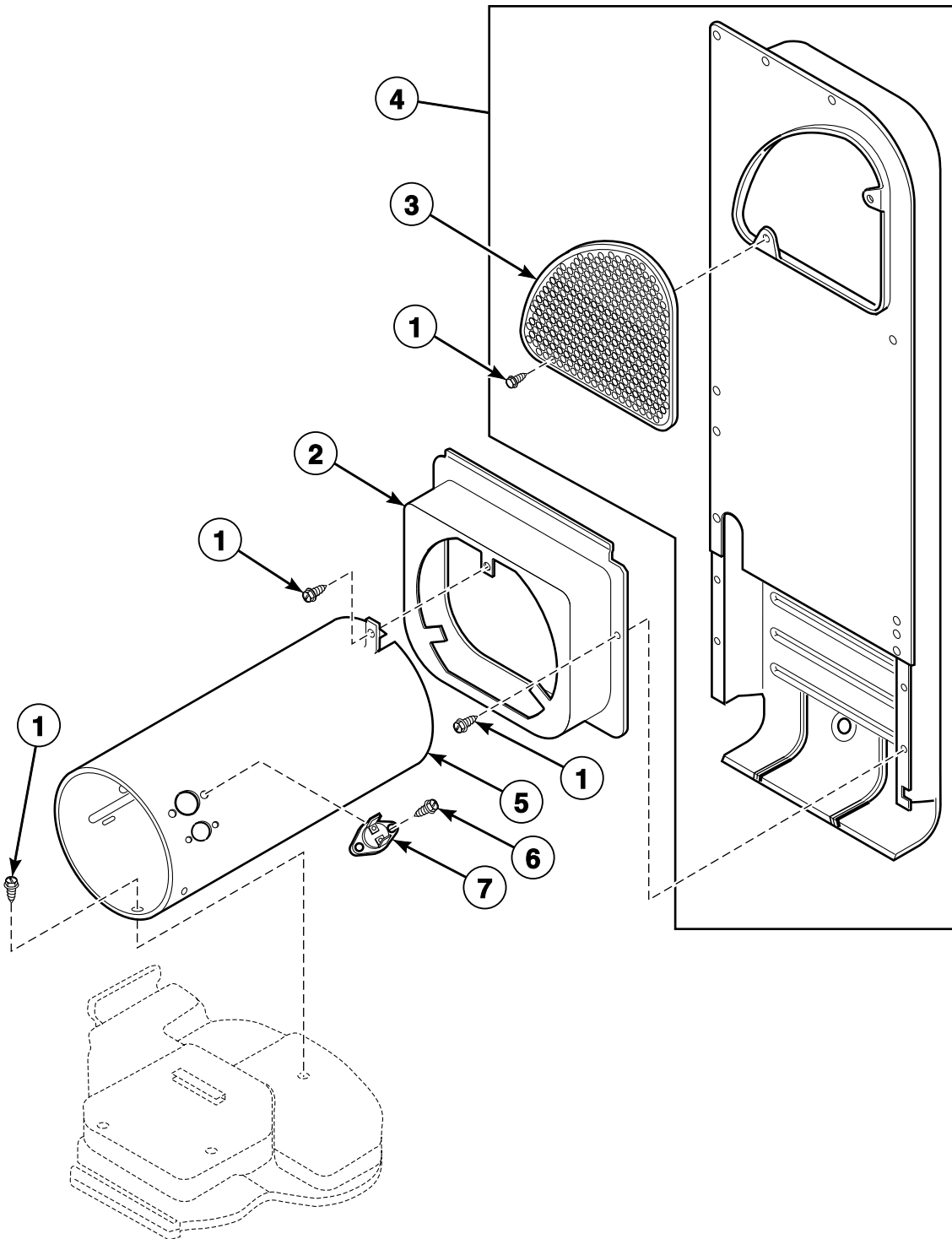
DRY1789P\_512174

## Heater Duct and Element Assembly

REF	PART NO.	DESCRIPTION	COMMENTS
1	503688	Screw	
2	500820	Outlet Cover	
3	510025P	Heater Duct and Screw Assembly	Includes items 1 and 2
4	510528	Wire Assembly	Orange; Thermostat jumper; Attaches to heater assembly
5	510527	Wire Assembly	Black; Fuse jumper; Attaches to heater assembly
6	511412	Thermal Fuse Assembly	
7	23222	Screw	
8	510701	Limit Thermostat	
9	510325P	Heater	4.75 kW; 208 Volt; Models AES28AWF1500, AES68AWF1500, CES68AWF1500 and KES18AWF1500
	510329P	Heater Assembly	5.35 kW; 240 Volt; All other models
10	61928	Heater Kit Assembly	4.75 kW; 208 Volt; Includes items 4-9
	964P3	Heater Kit	5.35 kW; 240 Volt; Includes items 4-9

# Heater Duct Assembly

Gas Models



DRY2145P\_512174

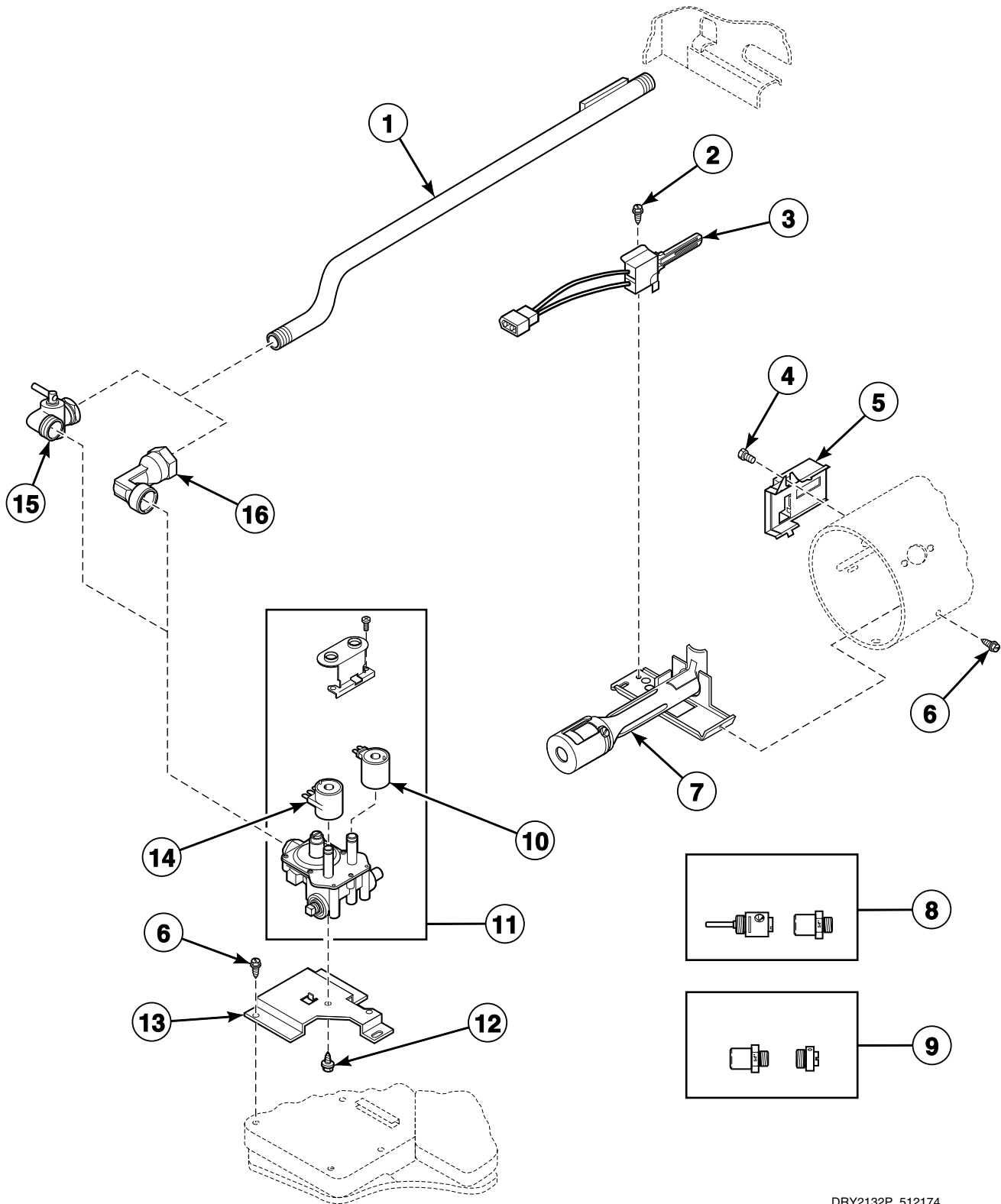


## Heater Duct Assembly

REF	PART NO.	DESCRIPTION	COMMENTS
1	503688	Screw	
2	510101	Heat Duct Shroud	
3	500820	Outlet Cover	
4	510025P	Heater Duct and Screw Assembly	Includes items 1 and 3
5	510131	Combustion Duct	
6	51782	Screw	
7	510702	Limit Thermostat	Black; Auto reset

# Gas Valve, Igniter and Gas Conversion Kits

Gas Models



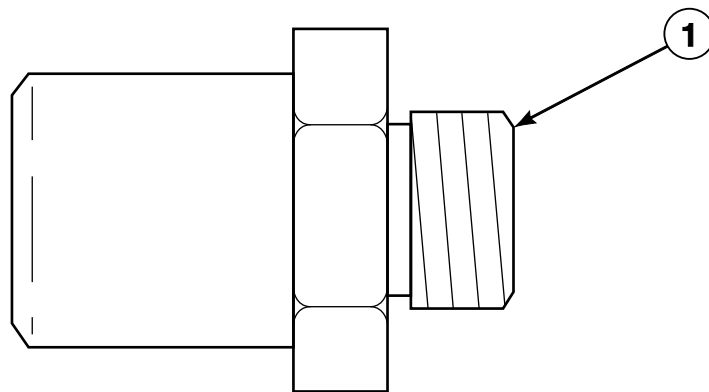
DRY2132P\_512174

## Gas Valve, Igniter and Gas Conversion Kits

REF	PART NO.	DESCRIPTION	COMMENTS
1	510204	Lead-In Pipe Assembly	
2	51782	Screw	
3	510184P	Igniter and Bracket Assembly	
4	23222	Screw	
5	510213	Sensor	
6	503688	Screw	
7	510149P	Burner Assembly	
8	649P3	L.P. Conversion Kit	Used to convert dryers from Natural Gas (N.G.) or Mixed Gas to Liquid Petroleum Gas (L.P.); 22,500 Btu
9	650P3	N.G. Conversion Kit	Used to convert dryers from L.P. to N.G. or Mixed Gas; 22,500 Btu
10	58804B	Secondary Coil	
11	510506P	Gas Valve Assembly	22,500 Btu; Includes items 10 and 14
12	56124	Screw	
13	510128	Gas Valve Mounting Bracket	
14	58804A	Booster and Holding Coil	
15	510205	Elbow Shut-Off Valve	Models through Serial No. 080600
16	513072	Elbow	Models starting Serial No. 080601

# Burner Orifice Spuds - For Higher Elevations

Gas Models



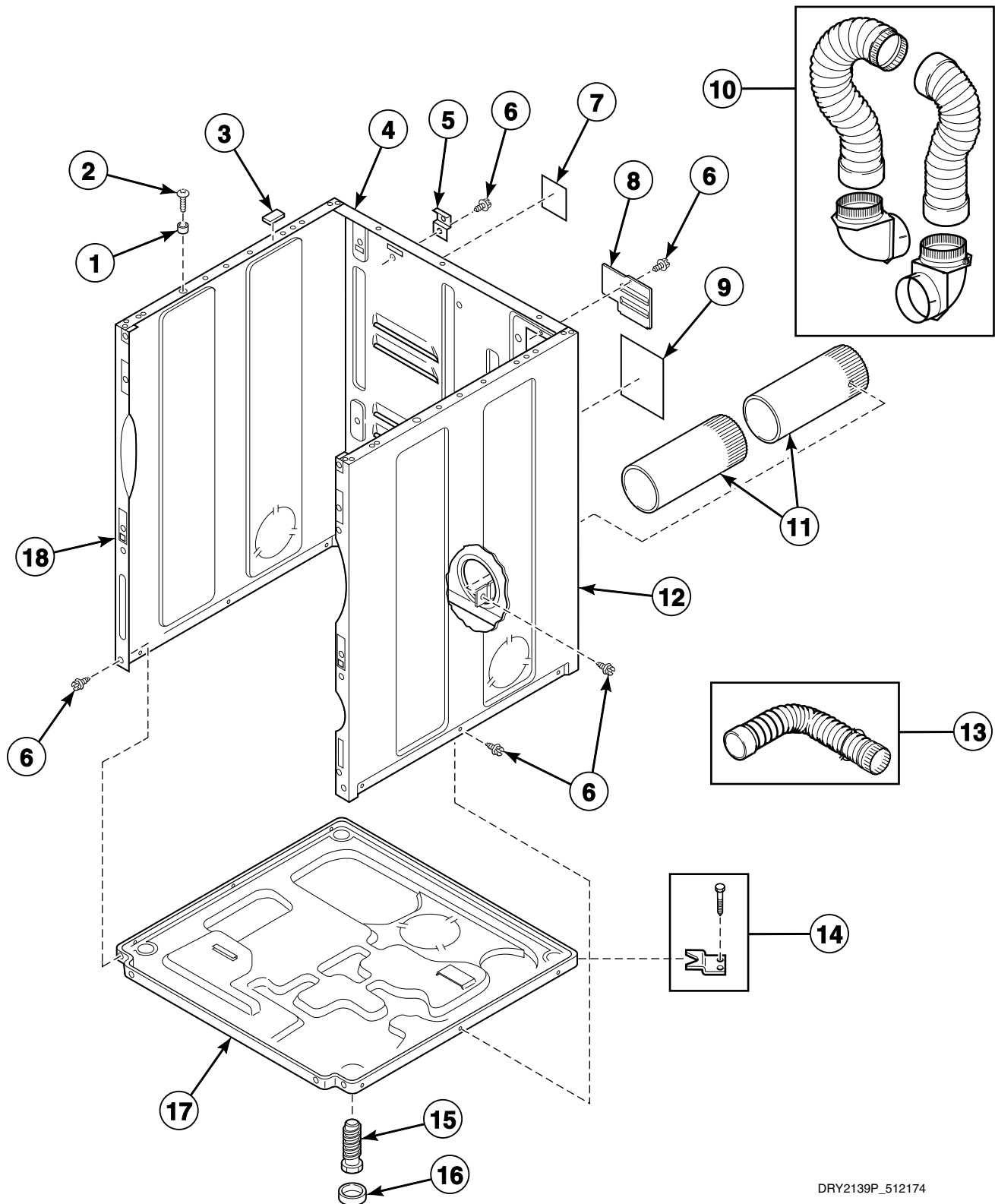
DRY2266P\_512174

## Burner Orifice Spuds - For Higher Elevations

REF	PART NO.	DESCRIPTION	COMMENTS
1	58755	L.P. Orifice	22,500 Btu; 3000-7999 feet (915-2439 m)
	503786	L.P. Orifice	22,500 Btu; 8000 feet (2440 m) and higher
	503778	N.G. Orifice	22,500 Btu; 3000-5999 feet (915-1829 m)
	58719	Screw Orifice	N.G.; 22,500 Btu; 6000-7999 feet (1830-2439 m)
	503779	N.G. Orifice	22,500 Btu; 8000-8999 feet (2440-2739 m)
	503780	N.G. Orifice	22,500 Btu; 9000-9999 feet (2740-3049 m)
	503781	N.G. Orifice	22,500 Btu; 10,000 feet (3050 m) and higher

## Cabinet, Exhaust Duct and Base - Single Dryers

Models ADE30RGS171TW01, ADE3LRGS171TW01, ADE41FSS171TN01, ADE4BFGS171TW01, ADE4BRGS171TW01, ADE4BRGS171TWAH, ADG30RGS111TW01, ADG3LRGS111TW01, ADG41FSS111TN01, ADG4BFGS111TW01, ADG4BRGS111TW01, ADG4BRGS111TWAH, AES17AWF, AES20AWF, AES28AWF, AES28AWF1500, AES68AWF, AES68AWF1500, AGS17AWF, AGS20AWF, AGS28AWF, AGS68AWF, CES68AWF, CES68AWF1500 and CGS68AWF



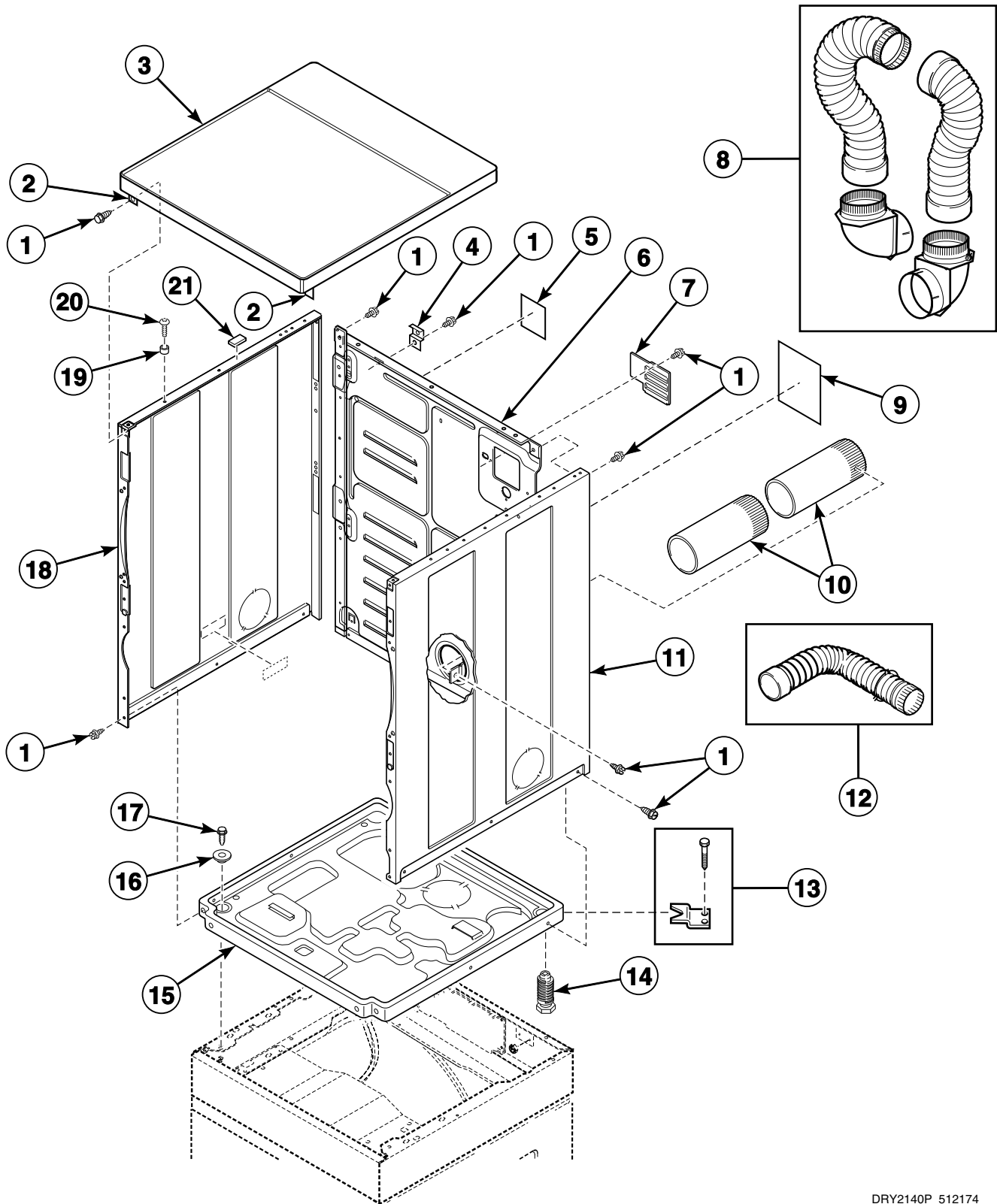
DRY2139P\_512174

## Cabinet, Exhaust Duct and Base - Single Dryers

REF	PART NO.	DESCRIPTION	COMMENTS
1	56079	Panel Locator	
2	512921	Screw	Use with stainless steel side panels
	39733	Screw	Use with painted side panels
3	56128	Bumper Pad	
4	510005P	Cabinet Rear Panel	
5	510136	Top Hinge	
6	503688	Screw	
7	511004	Gas Clearance Label	Gas models
8	510903	Access Panel Plate	
9	511005	Electric Clearance Label	Electric models
10	521P3	Flexible Venting Kit	
11	510137	Exhaust Duct	Each dryer requires 2 pieces
12	512952	Cabinet Side Panel	Right; Models ADE41FSS171TN01 and ADG41FSS111TN01
	510002WP	Cabinet Side Panel	Right; All other models
13	528P3	Directional Exhaust Kit	Used to vent dryer out the sides or bottom
14	526P3	Hold Down Kit	For mobile home installations
15	510135	Leveling Leg	
16	501855	Rubber Foot	
17	513901	Dryer Base	
18	512951	Cabinet Side Panel	Left; Models ADE41FSS171TN01 and ADG41FSS111TN01
	510001WP	Cabinet Side Panel	Left; All other models

# Cabinet, Exhaust Duct and Base - Stacked Dryers

Models ASE30FGW171TW01, ASG30FGW111TW01, KES18AWF, KES18AWF1500 and KGS18AWF



DRY2140P\_512174

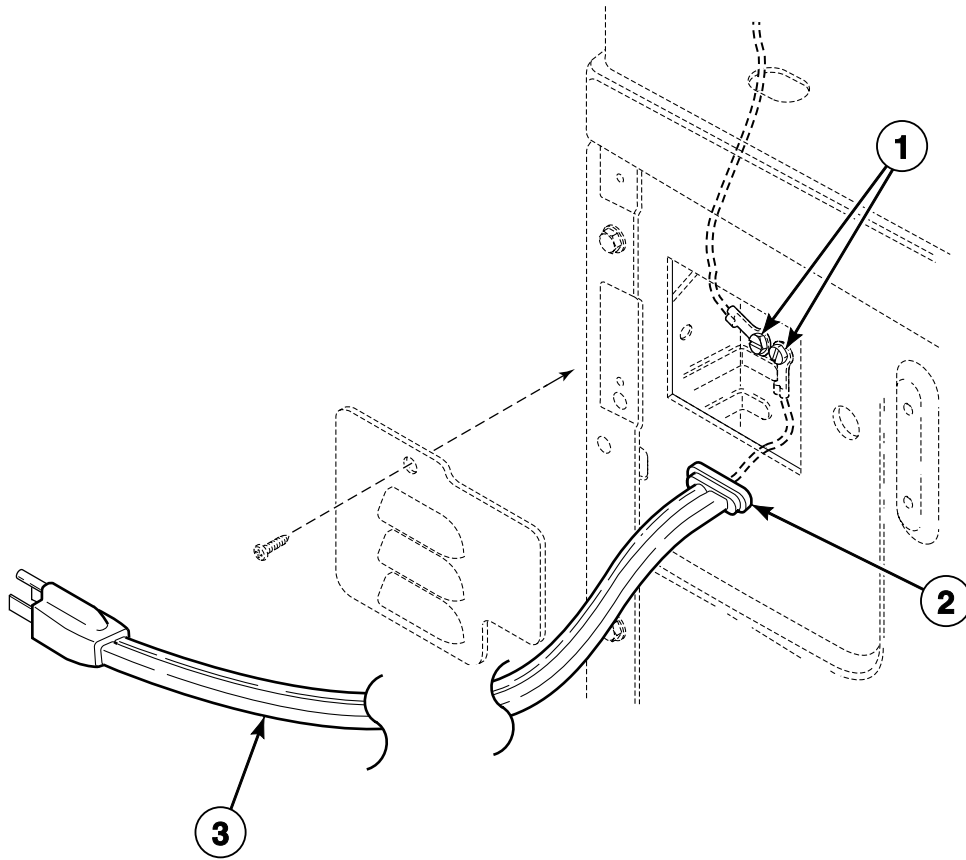


## Cabinet, Exhaust Duct and Base - Stacked Dryers

REF	PART NO.	DESCRIPTION	COMMENTS
	122P4P	Porcelain Touch-Up Paint	
1	503688	Screw	
2	510146	Bracket	
3	510032WP	Top Kit	
4	510136	Top Hinge	
5	511004	Gas Clearance Label	Models ASG30FGW111TW01 and KGS18AWF
6	510005P	Cabinet Rear Panel	
7	510903	Access Panel Plate	
8	521P3	Flexible Venting Kit	
9	511005	Electric Clearance Label	Models ASE30FGW171TW01, KES18AWF and KES18AWF1500
10	510137	Exhaust Duct	Each dryer requires 2 pieces
11	510002WP	Cabinet Side Panel	Right
12	528P3	Directional Exhaust Kit	Used to vent dryer out the sides
13	526P3	Hold Down Kit	For mobile home installations
14	510135	Leveling Leg	
15	513901	Dryer Base	
16	26509	Washer	
17	502431	Screw	
18	510001WP	Cabinet Side Panel	Left
19	56079	Panel Locator	
20	39733	Screw	
21	56128	Bumper Pad	

# Lead-In Cord

Gas Models

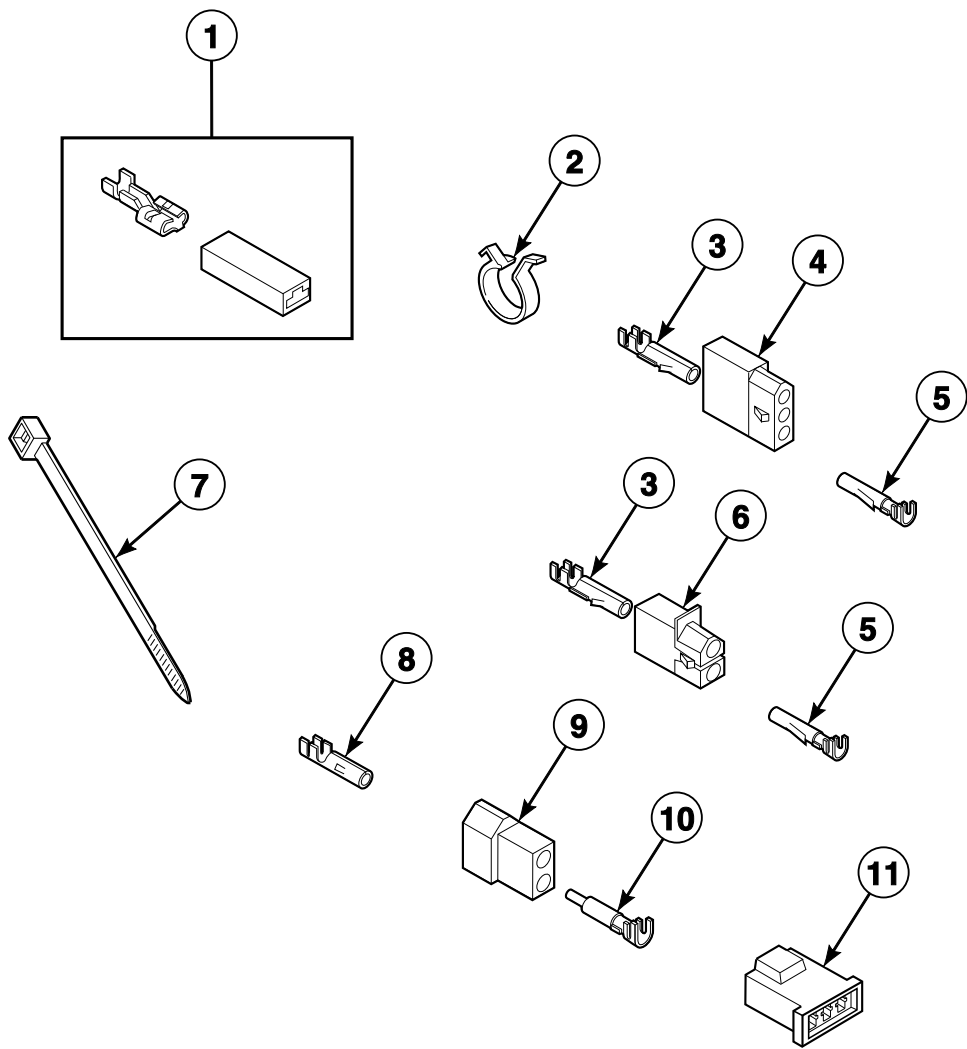


DRY1790P\_512174

## Lead-In Cord

REF	PART NO.	DESCRIPTION	COMMENTS
1	20530	Screw	
2	38384	Strain Relief	
3	59308	Lead-In Cord	Models ASG30FGW111TW01 and KGS18AWF
	56222	Lead-In Cord	All other models

# Terminal Block and Terminals

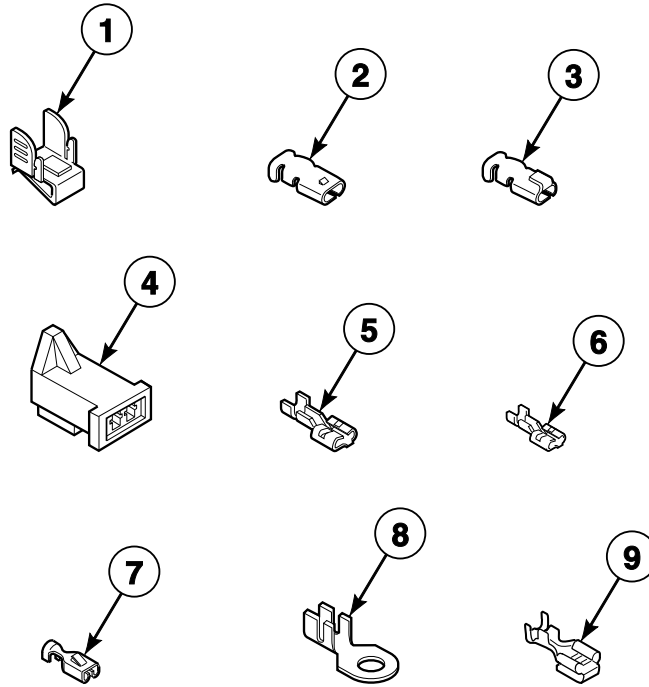


DRY1873P\_512174

## Terminal Block and Terminals

REF	PART NO.	DESCRIPTION	COMMENTS
1	00360	Insulated Female Spade Terminal	
2	504034	Wire Clip	11/16 inch
	687500	Wire Clip	1 inch
3	00117	Female Pin Terminal	Gas models
	00128	Female Pin Terminal	1/8 inch; Models ADE41FSS171TN01, ADE4BFGS171TW01, ASE30FGW171TW01, CES68AWF, CES68AWF1500, KES18AWF and KES18AWF1500
4	23039	3 Circuit Receptacle	Models ASG30FGW111TW01 and KGS18AWF
5	00116	Male Pin Terminal	Models ADG41FSS111TN01, ADG4BFGS111TW01, ASG30FGW111TW01, CGS68AWF and KGS18AWF
	00129	Male Pin Terminal	1/8 inch; Models ADE41FSS171TN01, ADE4BFGS171TW01, ADG30RGS111TW01, ADG3LRGS111TW01, ADG41FSS111TN01, ADG4BFGS111TW01, ADG4BRGS111TW01, ADG4BRGS111TWAH, AGS17AWF, AGS20AWF, AGS28AWF, AGS68AWF, ASE30FGW171TW01, ASG30FGW111TW01, CES68AWF, CES68AWF1500, CGS68AWF, KES18AWF, KES18AWF1500 and KGS18AWF
6	56451	2 Circuit Receptacle	Gas models
	56855	12 Circuit Receptacle	Models ADE41FSS171TN01, ADE4BFGS171TW01, ASE30FGW171TW01, CES68AWF, CES68AWF1500, KES18AWF and KES18AWF1500
7	55881	Harness Strap	
8	00130	Female Pin Terminal	1/8 inch; Models ADE41FSS171TN01, ADE4BFGS171TW01, ADG30RGS111TW01, ADG3LRGS111TW01, ADG41FSS111TN01, ADG4BFGS111TW01, ADG4BRGS111TW01, ADG4BRGS111TWAH, AGS17AWF, AGS20AWF, AGS28AWF, AGS68AWF, ASE30FGW171TW01, ASG30FGW111TW01, CES68AWF, CES68AWF1500, CGS68AWF, KES18AWF, KES18AWF1500 and KGS18AWF
9	56266	2 Circuit Plug	Gas models
10	00127	Male Pin Terminal	1/8 inch; Models ADE41FSS171TN01, ADE4BFGS171TW01, ADG30RGS111TW01, ADG3LRGS111TW01, ADG41FSS111TN01, ADG4BFGS111TW01, ADG4BRGS111TW01, ADG4BRGS111TWAH, AGS17AWF, AGS20AWF, AGS28AWF, AGS68AWF, ASE30FGW171TW01, ASG30FGW111TW01, CES68AWF, CES68AWF1500, CGS68AWF, KES18AWF, KES18AWF1500 and KGS18AWF
11	58800	3 Circuit Connector	Gas models

# Terminals



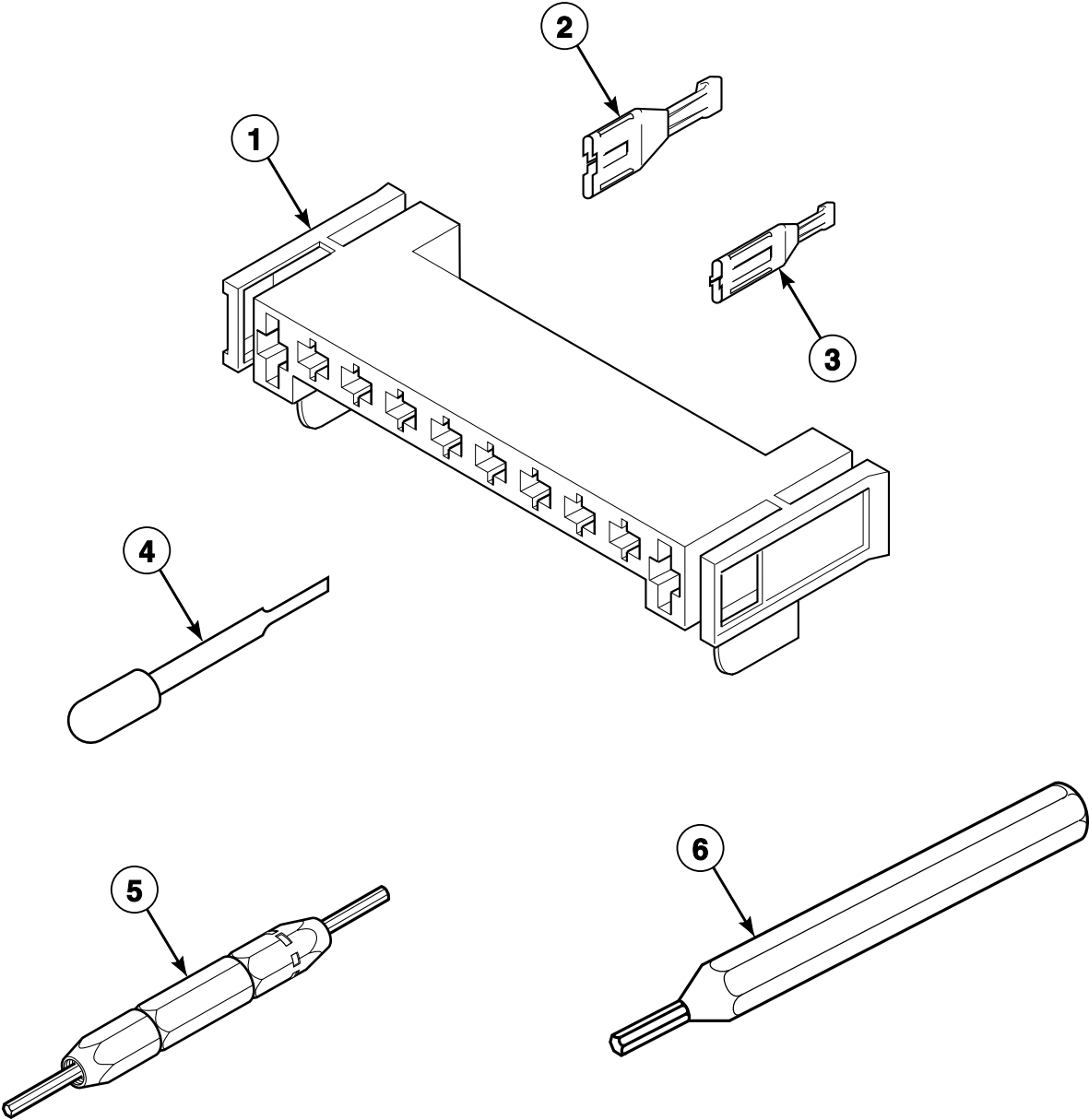
DRY1765P\_512174

# Terminals

REF	PART NO.	DESCRIPTION	COMMENTS
1	00161	Grounding Clip	
2	00189	Female Spade Terminal	1/8 inch; Gas models
3	00361	Female Piggyback Terminal	Gas models
4	58799	2 Circuit Connector	Gas models
5	00223	Female Spade Terminal	1/4 inch; (1) 18 gauge wire
6	N/A	Terminal	Gas models
7	N/A	Female Spade Terminal	1/4 inch; (2) 18 gauge wires or (1) 12 gauge wire
8	00110	Ring Terminal	10 stud; (1) 18 gauge wire; Gas models
9	00344	Female Tab Terminal	1/4 inch; Electric models

**N/A = Part no longer available**

# Terminals and Terminal Extractor Tools



DRY1767P\_512174

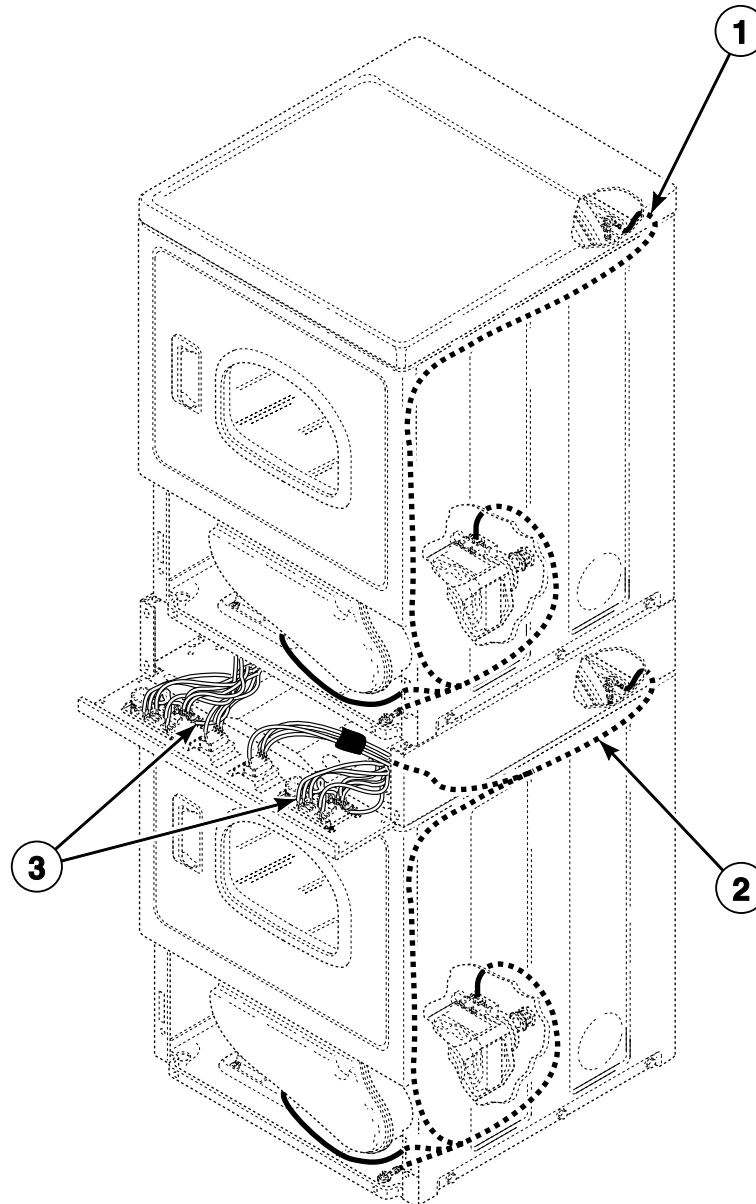


## Terminals and Terminal Extractor Tools

REF	PART NO.	DESCRIPTION	COMMENTS
1	500338	10 Position Housing	
2	00255	Female Terminal	1/4 inch; (1) 12 gauge wire; Electric models
	00256	Female Terminal	1/4 inch; (1) or (2) 18 gauge wires; Gas models
3	00188	Female Terminal	For 1 or 2 wire application
4	283P4	Terminal Extractor Tool	For use on Molex connectors
5	190P4	Extractor Tool	For use on electric dryer terminals
6	128P4	Extractor Tool	For use on gas dryer terminals

# Wire Harnesses and Wires - Stacked Models

Models ASG30FGW111TW01, KES18AWF, KES18AWF1500 and KGS18AWF



DRY2273P\_512174

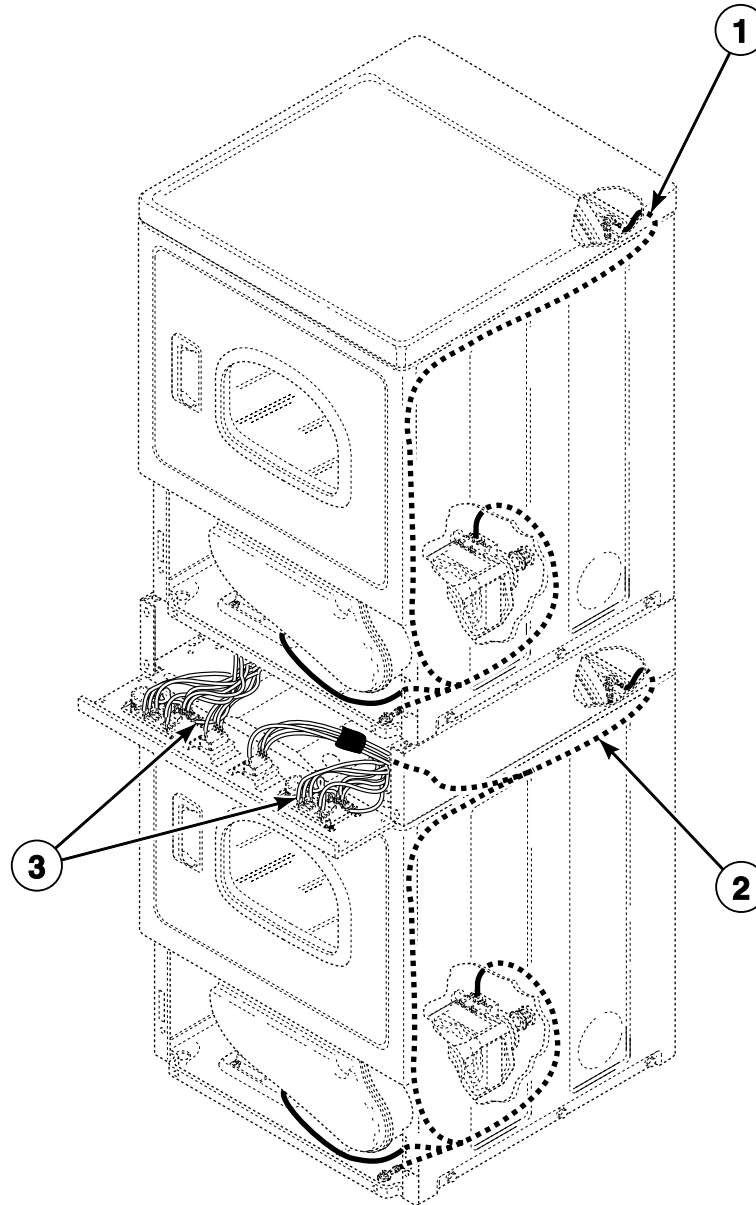
## Wire Harnesses and Wires - Stacked Models

REF	PART NO.	DESCRIPTION	COMMENTS
	45380	12 Gauge Wire	Orange; Order wire by the foot; Order terminals and connectors as required
	45001	18 Gauge Wire	Black; Order wire by the foot; Order terminals and connectors as required
1	511322P	Upper Harness Assembly	Main harness for upper dryer; Models KES18AWF and KES18AWF1500
	511325P	Upper Harness Assembly	Main harness for upper dryer; Models ASG30FGW111TW01 and KGS18AWF
2	511329	Wire Harness Assembly	Main harness for lower dryer; Models ASG30FGW111TW01 and KGS18AWF
	511330	Wire Harness Assembly	Main harness for lower dryer; Models KES18AWF and KES18AWF1500
3	511323	Security Cabinet Harness Assembly	Control cabinet to main harness; Models ASG30FGW111TW01 and KGS18AWF
	511324P	Security Cabinet Harness	Control cabinet to main harness; Models KES18AWF and KES18AWF1500

**NOTE: Individual wires are not available separately. Order complete wire harness, or order wire by the foot. When applying terminals to wires, it is recommended that the terminals be soldered to the wires.**

# Wire Harnesses and Wires - Stacked Models Through Serial No. 1303025314

Model ASE30FGW171TW01



DRY2273P\_512174

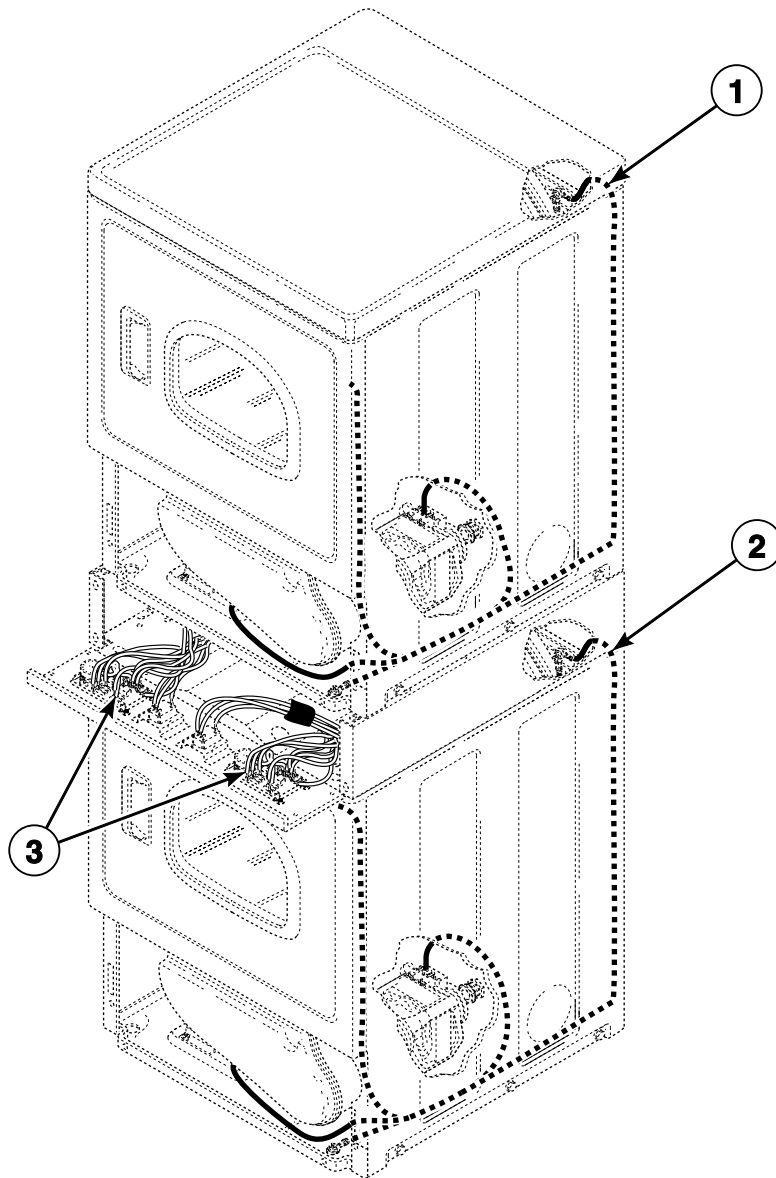
## Wire Harnesses and Wires - Stacked Models Through Serial No. 1303025314

REF	PART NO.	DESCRIPTION	COMMENTS
	45380	12 Gauge Wire	Orange; Order wire by the foot; Order terminals and connectors as required
	45001	18 Gauge Wire	Black; Order wire by the foot; Order terminals and connectors as required
<b>1</b>	511322P	Upper Harness Assembly	Main harness for upper dryer
<b>2</b>	511330	Wire Harness Assembly	Main harness for lower dryer
<b>3</b>	511324P	Security Cabinet Harness	Control cabinet to main harness

**NOTE:** Individual wires are not available separately. Order complete wire harness, or order wire by the foot. When applying terminals to wires, it is recommended that the terminals be soldered to the wires.

# Wire Harnesses and Wires - Stacked Models Starting Serial No. 1303025315

Model ASE30FGW171TW01



DRY2289P\_512174

## Wire Harnesses and Wires - Stacked Models

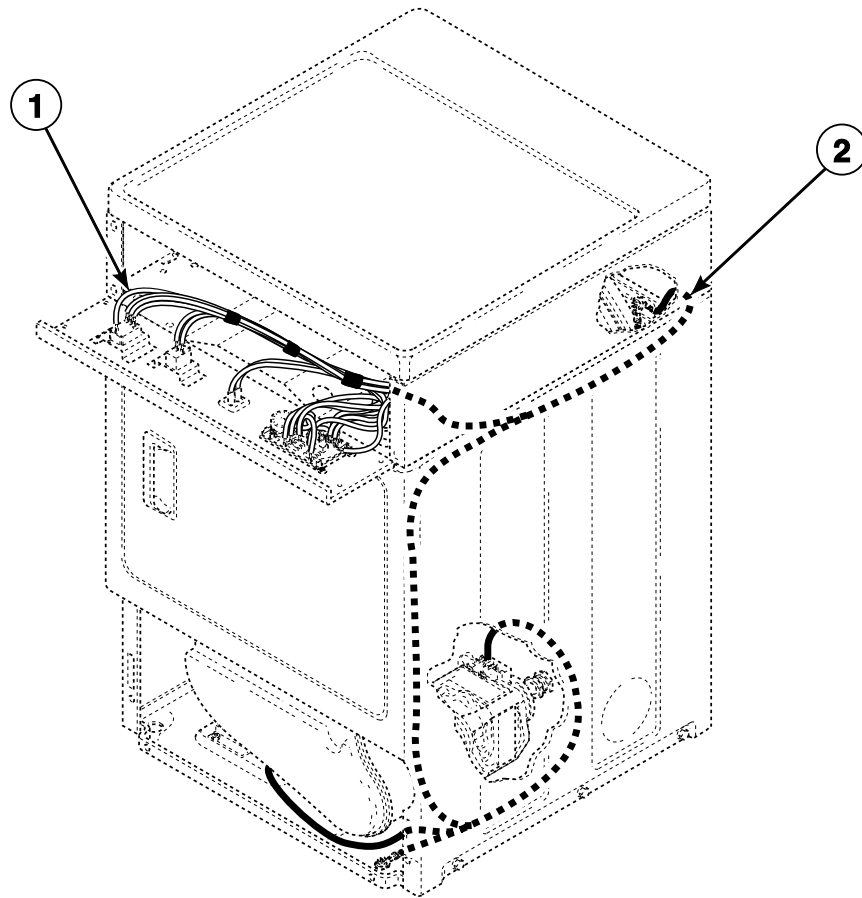
### Starting Serial No. 1303025315

REF	PART NO.	DESCRIPTION	COMMENTS
	45380	12 Gauge Wire	Orange; Order wire by the foot; Order terminals and connectors as required
	45001	18 Gauge Wire	Black; Order wire by the foot; Order terminals and connectors as required
<b>1</b>	513946	Wire Harness Assembly	Main harness for upper dryer
<b>2</b>	513948	Wire Harness Assembly	Main harness for lower dryer
<b>3</b>	511324P	Security Cabinet Harness	Control cabinet to main harness

**NOTE:** Individual wires are not available separately. Order complete wire harness, or order wire by the foot. When applying terminals to wires, it is recommended that the terminals be soldered to the wires.

## Wire Harnesses and Wires - Front Control Models

Models ADG41FSS111TN01, ADG4BFGS111TW01, CES68AWF, CES68AWF1500 and CGS68AWF



DRY2046P\_512174



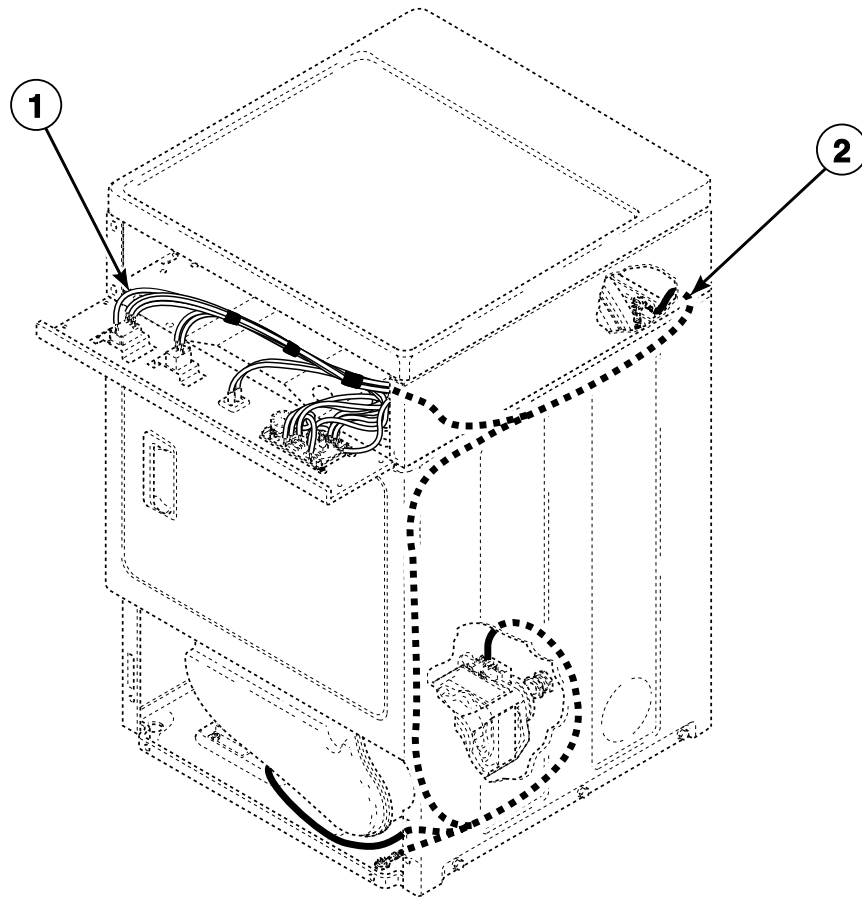
## Wire Harnesses and Wires - Front Control Models

REF	PART NO.	DESCRIPTION	COMMENTS
	45380	12 Gauge Wire	Orange; Order wire by the foot; Order terminals and connectors as required
	45001	18 Gauge Wire	Black; Order wire by the foot; Order terminals and connectors as required
1	511771	Security Cabinet Harness Assembly	Control cabinet to main harness; Models ADG41FSS111TN01, ADG4BFGS111TW01 and CGS68AWF
	511770	Security Cabinet Harness Assembly	Control cabinet to main harness; Models CES68AWF and CES68AWF1500
2	511769P	Wire Harness Assembly	Main harness; Models ADG41FSS111TN01, ADG4BFGS111TW01 and CGS68AWF
	511768P	Wire Harness Assembly	Main harness; Models CES68AWF and CES68AWF1500

**NOTE:** Individual wires are not available separately. Order complete wire harness, or order wire by the foot. When applying terminals to wires, it is recommended that the terminals be soldered to the wires.

# Wire Harnesses and Wires - Front Control Models Through Serial No. 1303025314

Models ADE41FSS171TN01 and ADE4BFGS171TW01



DRY2046P\_512174

## Wire Harnesses and Wires - Front Control Models Through Serial No. 1303025314

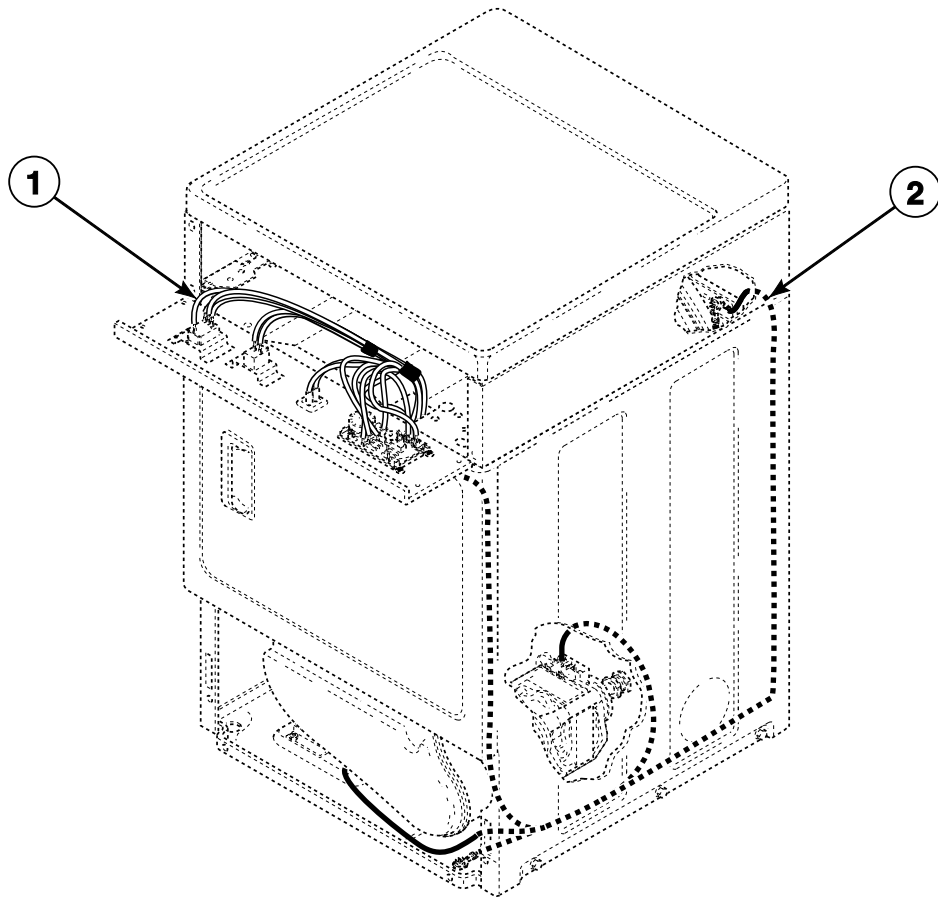
REF	PART NO.	DESCRIPTION	COMMENTS
	45380	12 Gauge Wire	Orange; Order wire by the foot; Order terminals and connectors as required
	45001	18 Gauge Wire	Black; Order wire by the foot; Order terminals and connectors as required
<b>1</b>	511770	Security Cabinet Harness Assembly	Control cabinet to main harness
<b>2</b>	511768P	Wire Harness Assembly	Main harness

**NOTE:** Individual wires are not available separately. Order complete wire harness, or order wire by the foot. When applying terminals to wires, it is recommended that the terminals be soldered to the wires.

# Wire Harnesses and Wires - Front Control Models

## Starting Serial No. 1303025315

Models ADE41FSS171TN01 and ADE4BFGS171TW01



DRY2290P\_512174

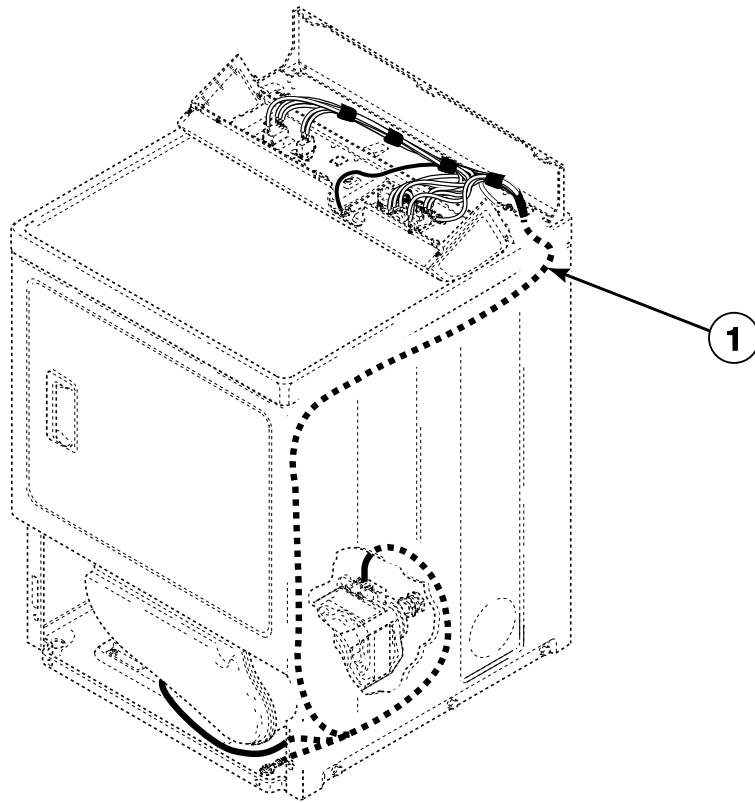
## Wire Harnesses and Wires - Front Control Models Starting Serial No. 1303025315

REF	PART NO.	DESCRIPTION	COMMENTS
	45380	12 Gauge Wire	Orange; Order wire by the foot; Order terminals and connectors as required
	45001	18 Gauge Wire	Black; Order wire by the foot; Order terminals and connectors as required
<b>1</b>	511770	Security Cabinet Harness Assembly	Control cabinet to main harness
<b>2</b>	513876	Harness Assembly	Main harness

**NOTE:** Individual wires are not available separately. Order complete wire harness, or order wire by the foot. When applying terminals to wires, it is recommended that the terminals be soldered to the wires.

## Wire Harnesses and Wires - Rear Control Models Through Serial No. 1207

Models ADE30RGS171TW01, ADE3LRGS171TW01, ADE4BRGS171TW01, ADE4BRGS171TWAH, ADG30RGS111TW01, ADG3LRGS111TW01, ADG4BRGS111TW01, ADG4BRGS111TWAH, AES17AWF, AES20AWF, AES28AWF, AES28AWF1500, AES68AWF, AES68AWF1500, AGS17AWF, AGS20AWF, AGS28AWF and AGS68AWF



DRY2047P\_512174

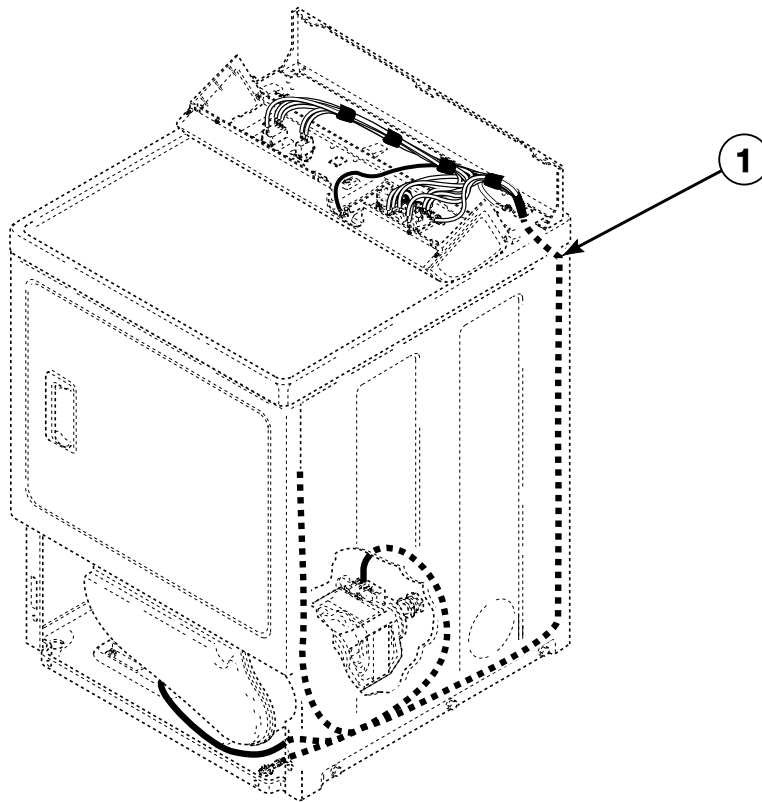
## Wire Harnesses and Wires - Rear Control Models Through Serial No. 1207

REF	PART NO.	DESCRIPTION	COMMENTS
	45380	12 Gauge Wire	Orange; Order wire by the foot; Order terminals and connectors as required
	45001	18 Gauge Wire	Black; Order wire by the foot; Order terminals and connectors as required
1	510444	Wire Harness Assembly	Main harness; Models ADE3LRGS171TW01, ADE4BRGS171TW01, ADE4BRGS171TWAH, AES20AWF, AES28AWF, AES28AWF1500, AES68AWF and AES68AWF1500
	511777	Wire Harness Assembly	Main harness; Models ADG3LRGS111TW01, AGS20AWF and AGS28AWF
	510424P	Wire Harness Assembly	Main harness; Models ADE30RGS171TW01 and AES17AWF
	510425P	Wire Harness Assembly	Main harness; Models ADG30RGS111TW01 and AGS17AWF
	510443P	Wire Harness Assembly	Main harness; Models ADG4BRGS111TW01, ADG4BRGS111TWAH and AGS68AWF

**NOTE:** Individual wires are not available separately. Order complete wire harness, or order wire by the foot. When applying terminals to wires, it is recommended that the terminals be soldered to the wires.

## Wire Harnesses and Wires - Rear Control Models Starting Serial No. 1207

Models ADE30RGS171TW01, ADE3LRGS171TW01, ADE4BRGS171TW01, ADE4BRGS171TWAH,  
ADG30RGS111TW01, ADG3LRGS111TW01, ADG4BRGS111TW01 and ADG4BRGS111TWAH



DRY2268P\_512174



## Wire Harnesses and Wires - Rear Control Models Starting Serial No. 1207

REF	PART NO.	DESCRIPTION	COMMENTS
	45380	12 Gauge Wire	Orange; Order wire by the foot; Order terminals and connectors as required
	45001	18 Gauge Wire	Black; Order wire by the foot; Order terminals and connectors as required
1	513660	Wire Harness Assembly	Main harness; Models ADE3LRGS171TW01, ADE4BRGS171TW01 and ADE4BRGS171TWAH through Serial No. 1303025314
	513880	Harness Assembly	Main harness; Models ADE3LRGS171TW01, ADE4BRGS171TW01 and ADE4BRGS171TWAH starting Serial No. 1303025315
	513665	Wire Harness Assembly	Main harness; Model ADG3LRGS111TW01
	513658	Wire Harness Assembly	Main harness; Model ADE30RGS171TW01 through Serial No. 1303025314
	513942	Harness Assembly	Main harness; Model ADE30RGS171TW01 starting Serial No. 1303025315
	513655	Wire Harness Assembly	Main harness; Model ADG30RGS111TW01
	513659	Wire Harness Assembly	Main harness; Models ADG4BRGS111TW01 and ADG4BRGS111TWAH

**NOTE:** Individual wires are not available separately. Order complete wire harness, or order wire by the foot. When applying terminals to wires, it is recommended that the terminals be soldered to the wires.

[illegible]

# Parts Index

## A

Access Panel and Guard Assembly	
514252W.....	19
514253.....	19
Access Panel Assembly	
514250W.....	19
514251.....	19
Access Panel Plate	
510903.....	37, 39
Adhesive	
511637P.....	23, 25, 27
Air Duct Assembly	
510151LG.....	23, 25
510151W.....	23, 25
Anti-Seize Compound	
27604P.....	21

## B

Badge	
803013.....	9
Blower and Fan Kit	
510717P.....	21
Blower Fan Assembly	
510139P.....	21
Blower Housing	
511969WP.....	21
Blower Housing Seal	
510238P.....	21
Bolt	
29651.....	7, 9
Booster and Holding Coil	
58804A.....	33
Bracket	
510146.....	39
Bumper Pad	
56128.....	37, 39
Burner Assembly	
510149P.....	33
Buzzer	
510211.....	5, 7, 9

## C

Cabinet Rear Panel	
510005P.....	37, 39
Cabinet Side Panel	
510001WP.....	37, 39
510002WP.....	37, 39
512951.....	37
512952.....	37
Combustion Duct	
510131.....	31
Connector, 2 Circuit	
58799.....	45

Connector, 3 Circuit	
58800.....	43
Control Cabinet	
513701.....	9
513702.....	9
803141.....	9
803142.....	9
Control Cabinet Bottom	
801777.....	7, 9, 11
Control Cabinet Rear	
800867.....	7
Control Knob Assembly	
803099P.....	9
803119P.....	5, 7, 11
804719.....	5
Control Panel Assembly	
512034W.....	11
512067W.....	7
513161.....	9
Control Support Panel	
503901.....	5
Cylinder Assembly	
505929LG.....	23
510265LG.....	23, 25
510265WP.....	23, 25
Cylinder Baffle	
510102LG.....	23, 25
510102W.....	23, 25
Cylinder Belt	
511255P.....	21
Cylinder Glide	
510188.....	23, 25
Cylinder Glide Bracket	
510145.....	23, 25
Cylinder Light Lens	
512106.....	23
Cylinder Roller	
510708P.....	27
Cylinder Roller Bracket	
510100.....	27
Cylinder Seal Assembly	
510207P.....	23, 25, 27

## D

Directional Exhaust Kit	
528P3.....	37, 39
Door and Liner Assembly	
511636WP.....	17
Door Catch Assembly	
514113.....	19
Door Handle Wedge	
510129.....	15, 17
Door Liner Grill	
503870LG.....	17
503870W.....	17
Door Pull and Wedge Kit	
510103WP.....	15, 17
803095.....	13

N/A items do not appear in index.

Door Strike	
510181 .....	13, 15, 17
Door Strike Mount	
510127 .....	13, 15, 17
Drum Light Lamp	
60954 .....	23
Dryer Base	
513901 .....	37, 39
Dryer Door	
510013WP .....	15
510082WP .....	17
513156 .....	13
Dryer Door Assembly	
514114W .....	17
Dryer Door Window	
503982P .....	17
Drying Rack	
512082P .....	23, 25

## E

Elbow	
513072 .....	33
Elbow Shut-Off Valve	
510205 .....	33
Electric Clearance Label	
511005 .....	37, 39
End Panel	
504008W .....	5
504009WP .....	5
Exhaust Duct	
510137 .....	37, 39
Expansion Clip	
70030501 .....	7, 9, 11
Extractor Tool	
128P4 .....	47
190P4 .....	47

## F

Fabric Selector Switch	
513505 .....	5, 11
513506 .....	5, 7, 9
Felt Pad	
510189 .....	23, 25
Female Piggyback Terminal	
00361 .....	45
Female Pin Terminal	
00117 .....	43
00128 .....	43
00130 .....	43
Female Spade Terminal	
00189 .....	45
00223 .....	45
Female Tab Terminal	
00344 .....	45
Female Terminal	
00188 .....	47
00255 .....	47
00256 .....	47
Flexible Venting Kit	
521P3 .....	37, 39

N/A items do not appear in index.

Front Bulkhead Assembly	
510266P .....	25
512476 .....	23
Front Panel	
510066WP .....	19
512542 .....	19
Front Panel Assembly	
513781W .....	19
Front Panel Seal	
511056 .....	19

## G

Gas Clearance Label	
511004 .....	37, 39
Gas Valve Assembly	
510506P .....	33
Gas Valve Mounting Bracket	
510128 .....	33
Glass Door Window	
513910 .....	17
Glide Kit	
RB170003 .....	23, 25
Graphic Overlay	
512212 .....	11
512214 .....	7
513013 .....	11
513014 .....	7
Graphic Panel	
512179W .....	5
512211W .....	5
512213W .....	5
513011W .....	5
513012W .....	5
513015W .....	5
514304W .....	5
Grounding Clip	
00161 .....	45

## H

Handle Cover	
803094P .....	13
Harness Assembly	
513876 .....	59
513880 .....	63
513942 .....	63
Harness Strap	
55881 .....	43
Heat Duct Shroud	
510101 .....	31
Heater	
510325P .....	29
Heater Assembly	
510329P .....	29
Heater Duct and Screw Assembly	
510025P .....	29, 31
Heater Kit	
964P3 .....	29
Heater Kit Assembly	
61928 .....	29

Hinge	511036	7, 9, 13, 15, 17
Hinge Hole Plug	510186	19
Hold Down Kit	526P3	37, 39
Hood Back Panel	510099	5
Housing, 10 Position	500338	47

## I

Idler Lever	510133	21
Idler Lever and Wheel Assembly	510158	21
Idler Spring	510185	21
Idler Wheel and Bearing Assembly	510142P	21
Igniter and Bracket Assembly	510184P	33
Insulated Female Spade Terminal	00360	43

## K

Knob Assembly	36701W	5, 7, 11
	803168P	5
	804720	5

## L

Lead-In Cord	56222	41
	59308	41
Lead-In Pipe Assembly	510204	33
Left Control Cabinet Side	800900WP	7, 11
Leveling Leg	510135	37, 39
Light Housing Assembly	512108	23
Limit Thermostat	510701	29
	510702	31
Liner and Seal Assembly	510098LG	17
	510098W	17
Liner Door Seal	510147P	13, 15, 17
Liner, Seal and Grill Assembly	510163WP	15
	513109P	13, 15
Lint Filter	503980LG	23, 25
	503980W	23, 25

Lint Filter Cover	510502LG	23, 25
	510502W	23, 25
L.P. Conversion Kit	649P3	33
L.P. Orifice	503786	35
	58755	35

## M

Male Pin Terminal	00116	43
	00127	43
	00129	43
Motor and Pulley Assembly	511629P	21
Motor Hub Ring Kit	590P3	21
Motor Mount	510060	21
Motor Mount Clamp	510180	21
Motor Pulley	500011	21

## N

Nut	36020	9
	44071201	17
	44087201	7, 9
	52566	21
	56156	21, 27
	800931	11
N.G. Conversion Kit	650P3	33
N.G. Orifice	503778	35
	503779	35
	503780	35
	503781	35

## O

Outlet Cover	500820	29, 31
--------------	--------	--------

## P

Panel	513112	9
Panel Locator	56079	19, 37, 39
Plug, 2 Circuit	56266	43
Pop Rivet	685847	9
Porcelain Touch-Up Paint	122P4P	39

N/A items do not appear in index.

---

## R

Rear Bulkhead Assembly	
505246 .....	27
511082P .....	27
Rear Control Cabinet	
801058 .....	9, 11
Receptacle, 12 Circuit	
56855 .....	43
Receptacle, 2 Circuit	
56451 .....	43
Receptacle, 3 Circuit	
23039 .....	43
Resistor Assembly	
511277 .....	5, 7, 9, 11
Retaining Ring	
23748 .....	21, 27
Right Control Cabinet Side	
800915W .....	7, 11
Ring Terminal	
00110 .....	45
Rocker Switch	
38424W .....	5, 7
Roller Kit	
RB170002 .....	27
Rubber Foot	
501855 .....	37

---

## S

Screw	
F430956 .....	9
M405188 .....	9, 23
20530 .....	41
23008 .....	9
23222 .....	29, 33
31260 .....	21
33562 .....	19
39733 .....	19, 37, 39
430497 .....	11
500226 .....	17
500227 .....	23
500824 .....	21
501086 .....	5, 7, 9, 23
501285 .....	23, 25, 27
502431 .....	39
502535 .....	21
503661 .....	9
503688 .....	19, 21, 23, 25, 27, 29, 31, 33, 37, 39
505295 .....	13, 15, 17, 23, 25
505870 .....	17
512921 .....	37
51782 .....	31, 33
52864 .....	25
56124 .....	33
61199 .....	27
62588 .....	23, 25
70240301 .....	7, 9
800548 .....	13
800930 .....	7, 11
Screw Orifice	
58719 .....	35

Seal Kit	
RB170001 .....	23, 25, 27
Secondary Coil	
58804B .....	33
Security Cabinet Harness	
511324P .....	49, 51, 53
Security Cabinet Harness Assembly	
511323 .....	49
511770 .....	55, 57, 59
511771 .....	55
Selector Switch	
803568 .....	9
Sensor	
510213 .....	33
Shaft	
56461P .....	21, 27
Speed Clip	
28835 .....	19
Strain Relief	
38384 .....	41
Switch	
512973 .....	19

---

## T

Terminal Block Assembly	
510190P .....	27
Terminal Block Shield	
510237 .....	27
Terminal Extractor Tool	
283P4 .....	47
Thermal Fuse Assembly	
511412 .....	29
Thermostat	
504515 .....	21
510707P .....	21
Timer	
505794P .....	5, 11
511149P .....	5, 7, 9
511150P .....	5, 7, 9
Timer and Harness Kit	
505797P .....	5, 11
Timer Knob Assembly	
512117W .....	5, 7, 11
803098P .....	9
803118P .....	7, 11
Top and Gusset Assembly	
802247WP .....	7
Top Cover	
505808W .....	5
Top Hinge	
510136 .....	37, 39
Top Kit	
510032WP .....	39
803144P .....	9
Top Mounting Bracket	
504228 .....	7, 9
Top Panel Kit	
510029WP .....	5

N/A items do not appear in index.

---

## U

Upper Harness Assembly	
511322P .....	49, 51
511325P .....	49

---

## W

Warning/Caution Label	
500281 .....	19
Washer	
26509 .....	39
504082 .....	27
52549 .....	21, 27
Window Clip	
513958 .....	17
Window Trim	
503981W .....	17
513960W .....	17
Wire Assembly	
510527 .....	29
510528 .....	29
510540 .....	5
511148 .....	5, 7
513170P .....	9
Wire Clip	
504034 .....	43
687500 .....	43
Wire Harness Assembly	
510424P .....	61
510425P .....	61
510443P .....	61
510444 .....	61
511329 .....	49
511330 .....	49, 51
511768P .....	55, 57
511769P .....	55
511777 .....	61
513655 .....	63
513658 .....	63
513659 .....	63
513660 .....	63
513665 .....	63
513946 .....	53
513948 .....	53
Wire, 12 Gauge	
45380 .....	49, 51, 53, 55, 57, 59, 61, 63
Wire, 18 Gauge	
45001 .....	49, 51, 53, 55, 57, 59, 61, 63

---

[illegible]